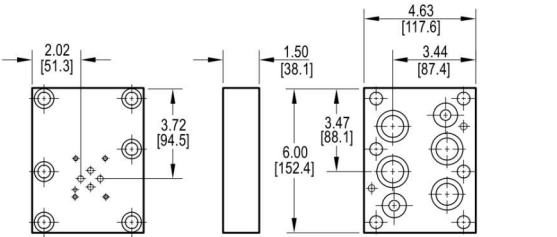


# Valve Adaptors for D08 Manifolds

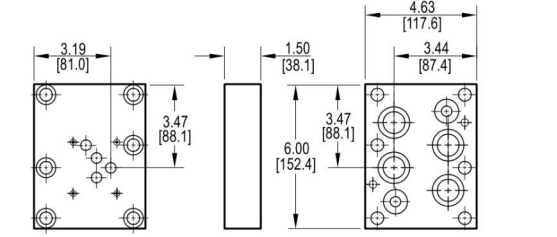
## Adapt D03 valve to D08 manifold

Valve mtg: UNC #10-24 x 0.50 DP or Metric M5-0.8mm ISO 6H x [12.7] DP  
 Adaptor hardware / interface seal kit is supplied.



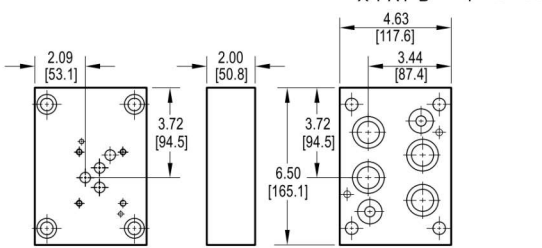
## Adapt D05 valve to D08 manifold

Valve mtg: UNC 0.25-20 x 0.50 DP or Metric M6-1.0mm ISO 6H x [12.7] DP  
 Adaptor hardware / interface seal kit is supplied.



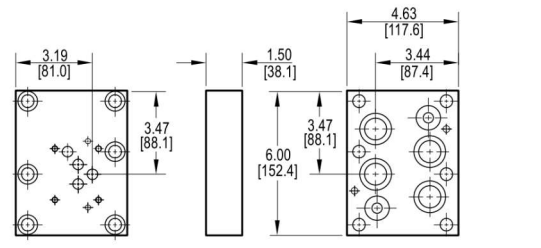
## Adapt D05H valve to D08 manifold

Valve mtg: UNC 0.25-20 x 0.75 DP or Metric M6-1.0mm ISO 6H x [19.1] DP  
 Adaptor hardware / interface seal kit is supplied.



## Adapt D05HE valve to D08 manifold

Valve mtg: 0.25-20 UNC x 0.50 DP or Metric M6-1.0mm ISO 6H x [12.7] DP  
 Adaptor hardware / interface seal kit is supplied.



# Ordering Information

Material	Valve Pattern	Manifold Pattern	Product Type	Port Orientation	Bolt Threads																																						
<table border="1"> <tr><th colspan="2">Material</th></tr> <tr><td><b>A</b></td><td>Aluminum - 6061-T6 3000† psi • 20.7 MPa</td></tr> <tr><td><b>D</b></td><td>Ductile Iron - D4512 5000† psi • 34.5 MPa</td></tr> <tr><td colspan="2">† Working pressure should be considered in accordance with ISO 4413 to determine appropriate material type.</td></tr> </table>	Material		<b>A</b>	Aluminum - 6061-T6 3000† psi • 20.7 MPa	<b>D</b>	Ductile Iron - D4512 5000† psi • 34.5 MPa	† Working pressure should be considered in accordance with ISO 4413 to determine appropriate material type.		<table border="1"> <tr><th colspan="2">Valve Pattern</th></tr> <tr><td colspan="2">See Tech Information</td></tr> <tr><td><b>D03</b></td><td>ISO 4401-03-02 NFPA T3.5.1-D03</td></tr> <tr><td><b>D05</b></td><td>ISO 4401-05-04 NFPA T3.5.1-D05</td></tr> <tr><td><b>D05H</b></td><td>(USA std) NFPA T3.5.1-D05 Alt B</td></tr> <tr><td><b>D05HE</b></td><td>ISO 4401-05-05 NFPA T3.5.1-D05 Alt A</td></tr> </table>	Valve Pattern		See Tech Information		<b>D03</b>	ISO 4401-03-02 NFPA T3.5.1-D03	<b>D05</b>	ISO 4401-05-04 NFPA T3.5.1-D05	<b>D05H</b>	(USA std) NFPA T3.5.1-D05 Alt B	<b>D05HE</b>	ISO 4401-05-05 NFPA T3.5.1-D05 Alt A	<table border="1"> <tr><th colspan="2">Manifold Pattern</th></tr> <tr><td><b>D08</b></td><td>ISO 4401-08-07 NFPA T3.5.1-D08 See Tech Information</td></tr> </table>	Manifold Pattern		<b>D08</b>	ISO 4401-08-07 NFPA T3.5.1-D08 See Tech Information	<table border="1"> <tr><th colspan="2">Product Type</th></tr> <tr><td><b>VA</b></td><td>Valve Adaptor</td></tr> </table>	Product Type		<b>VA</b>	Valve Adaptor	<table border="1"> <tr><th colspan="2">Port Orientation</th></tr> <tr><td><b>AB</b></td><td>A<sub>v</sub> common to A<sub>m</sub> B<sub>v</sub> common to B<sub>m</sub></td></tr> </table>	Port Orientation		<b>AB</b>	A <sub>v</sub> common to A <sub>m</sub> B <sub>v</sub> common to B <sub>m</sub>	<table border="1"> <tr><th colspan="2">Bolt Threads</th></tr> <tr><td colspan="2">Omit for inch (UNC) bolt kit.</td></tr> <tr><td><b>M</b></td><td>Metric (ISO 6H) bolt kit</td></tr> </table>	Bolt Threads		Omit for inch (UNC) bolt kit.		<b>M</b>	Metric (ISO 6H) bolt kit
Material																																											
<b>A</b>	Aluminum - 6061-T6 3000† psi • 20.7 MPa																																										
<b>D</b>	Ductile Iron - D4512 5000† psi • 34.5 MPa																																										
† Working pressure should be considered in accordance with ISO 4413 to determine appropriate material type.																																											
Valve Pattern																																											
See Tech Information																																											
<b>D03</b>	ISO 4401-03-02 NFPA T3.5.1-D03																																										
<b>D05</b>	ISO 4401-05-04 NFPA T3.5.1-D05																																										
<b>D05H</b>	(USA std) NFPA T3.5.1-D05 Alt B																																										
<b>D05HE</b>	ISO 4401-05-05 NFPA T3.5.1-D05 Alt A																																										
Manifold Pattern																																											
<b>D08</b>	ISO 4401-08-07 NFPA T3.5.1-D08 See Tech Information																																										
Product Type																																											
<b>VA</b>	Valve Adaptor																																										
Port Orientation																																											
<b>AB</b>	A <sub>v</sub> common to A <sub>m</sub> B <sub>v</sub> common to B <sub>m</sub>																																										
Bolt Threads																																											
Omit for inch (UNC) bolt kit.																																											
<b>M</b>	Metric (ISO 6H) bolt kit																																										

In order to constantly improve the quality of our products, we retain the right to make changes to the products and specifications at any time without prior notice.

Customers have the responsibility continuously check all the information on all data sheets.