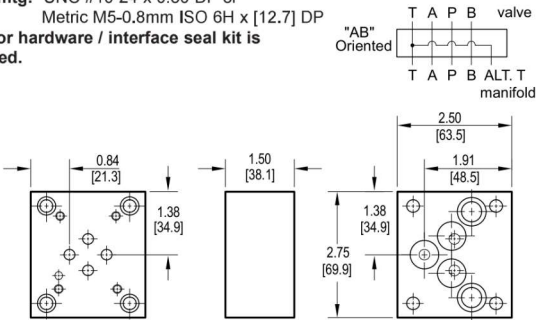




Valve Adaptors for D05 Manifolds

Adapt D03 valve to D05 manifold • AB oriented

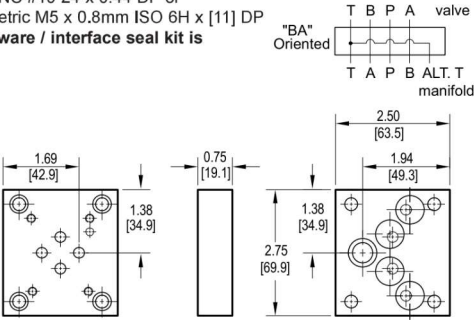
Valve mtg: UNC #10-24 x 0.50 DP or
Metric M5-0.8mm ISO 6H x [12.7] DP
Adaptor hardware / interface seal kit is
supplied.



This adaptor permits the installation of a D03 valve on a D05 manifold. This adaptor, unlike *D03D05VABA*, properly orients the A & B ports on the manifold to the respective valve solenoids.

Adapt D03 valve to D05 manifold • BA oriented

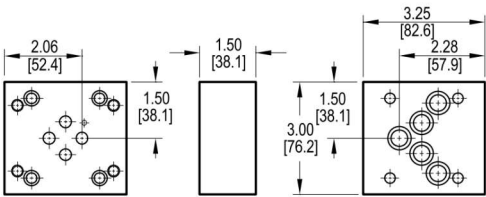
Valve mtg: UNC #10-24 x 0.44 DP or
Metric M5 x 0.8mm ISO 6H x [11] DP
Adaptor hardware / interface seal kit is
supplied.



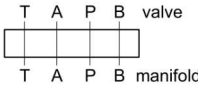
This adaptor permits the installation of a D03 valve on a D05 manifold. This adaptor, while low in cost, does not orient the A & B ports on the manifold to the respective valve solenoids.

Adapt S04 valve to D05 manifold • AB oriented

Valve mtg: UNC 0.31-18 x 0.63 DP or
Metric M8 x 1.25mm ISO 6H x [15.9] DP
Adaptor hardware / interface seal kit is supplied.



This adaptor properly orients the A & B ports on the manifold to the respective valve solenoids.



Ordering Information

Material	Valve Pattern	Manifold Pattern	Product Type	Port Orientation	Bolt Threads																	
<table><tr><th>Material</th></tr><tr><td>A Aluminum - 6061-T6 3000† psi • 20.7 MPa</td></tr><tr><td>D Ductile Iron - D4512 5000† psi • 34.5 MPa</td></tr><tr><td>† Working pressure should be considered in accordance with ISO 4413 to determine appropriate material type.</td></tr></table>	Material	A Aluminum - 6061-T6 3000† psi • 20.7 MPa	D Ductile Iron - D4512 5000† psi • 34.5 MPa	† Working pressure should be considered in accordance with ISO 4413 to determine appropriate material type.	<table><tr><th>Valve Pattern</th></tr><tr><td>D03 ISO 4401-03-02 NFPA T3.5.1-D03 See Tech Information</td></tr><tr><td>S04 ISO 10372-04-04 Daman standard S04 See Tech Information</td></tr></table>	Valve Pattern	D03 ISO 4401-03-02 NFPA T3.5.1-D03 See Tech Information	S04 ISO 10372-04-04 Daman standard S04 See Tech Information	<table><tr><th>Manifold Pattern</th></tr><tr><td>D05 ISO 4401-05-04 NFPA T3.5.1-D05 See Tech Information</td></tr></table>	Manifold Pattern	D05 ISO 4401-05-04 NFPA T3.5.1-D05 See Tech Information	<table><tr><th>Product Type</th></tr><tr><td>VA Valve Adaptor</td></tr></table>	Product Type	VA Valve Adaptor	<table><tr><th>Port Orientation</th></tr><tr><td>AB A_V common to A_m B_V common to B_m</td></tr><tr><td>BA B_V common to A_m A_V common to B_m D03 valve pattern only.</td></tr></table>	Port Orientation	AB A _V common to A _m B _V common to B _m	BA B _V common to A _m A _V common to B _m D03 valve pattern only.	<table><tr><th>Bolt Threads</th></tr><tr><td>Omit for inch (UNC) bolt kit.</td></tr><tr><td>M Metric (ISO 6H) bolt kit</td></tr></table>	Bolt Threads	Omit for inch (UNC) bolt kit.	M Metric (ISO 6H) bolt kit
Material																						
A Aluminum - 6061-T6 3000† psi • 20.7 MPa																						
D Ductile Iron - D4512 5000† psi • 34.5 MPa																						
† Working pressure should be considered in accordance with ISO 4413 to determine appropriate material type.																						
Valve Pattern																						
D03 ISO 4401-03-02 NFPA T3.5.1-D03 See Tech Information																						
S04 ISO 10372-04-04 Daman standard S04 See Tech Information																						
Manifold Pattern																						
D05 ISO 4401-05-04 NFPA T3.5.1-D05 See Tech Information																						
Product Type																						
VA Valve Adaptor																						
Port Orientation																						
AB A _V common to A _m B _V common to B _m																						
BA B _V common to A _m A _V common to B _m D03 valve pattern only.																						
Bolt Threads																						
Omit for inch (UNC) bolt kit.																						
M Metric (ISO 6H) bolt kit																						

In order to constantly improve the quality of our products, we retain the right to make changes to the products and specifications at any time without prior notice.

Customers have the responsibility continuously check all the information on all data sheets.