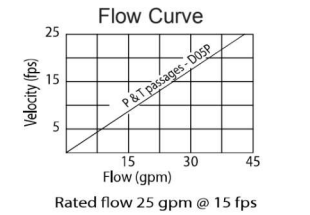
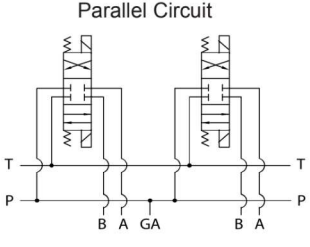
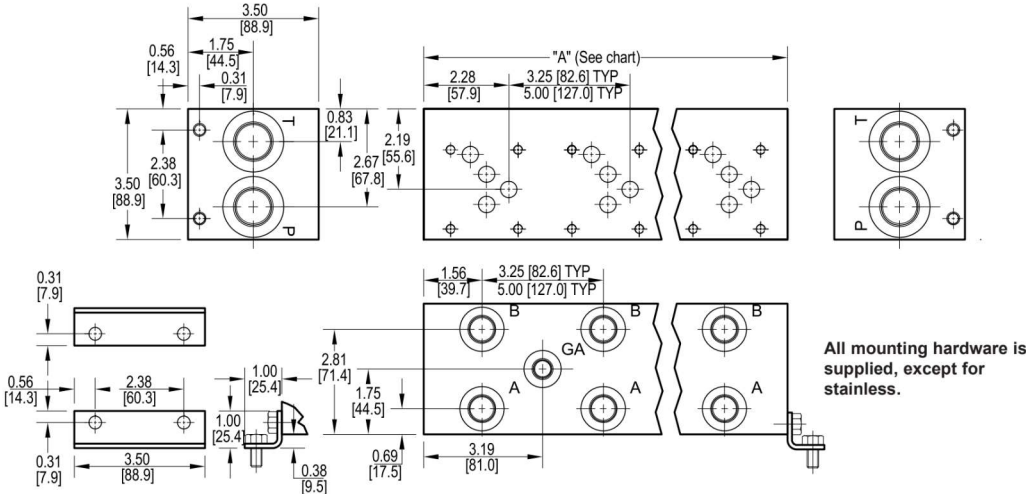




D05 Standard Flow Parallel Manifold



All mounting hardware is supplied, except for stainless.

No. of stations	* 01	02	03	04	05	06	07	08	09	10	11	12	13	14	15	16	17	18	19	20	21
"A" length (code 3 spa.) inch [mm]	3.25 [82.6]	6.50 [165.1]	9.75 [247.7]	13.00 [330.2]	16.25 [412.8]	19.50 [495.3]	22.75 [577.9]	26.00 [660.4]	29.25 [743.0]	32.50 [825.5]	35.75 [908.1]	39.00 [990.6]	42.25 [1073.2]	45.50 [1155.7]	48.75 [1238.3]	52.00 [1320.8]	55.25 [1403.4]	58.50 [1485.9]	61.75 [1568.5]	65.00 [1651.0]	68.25 [1733.6]
apx. weight alum lb [kg]	4 [2]	8 [4]	11 [5]	14 [7]	17 [8]	21 [10]	24 [11]	27 [12]	30 [14]	34 [15]	37 [17]	41 [19]	44 [20]	47 [21]	51 [23]	55 [25]	58 [26]	61 [28]	64 [29]	67 [30]	71 [32]
apx. weight ferrous lb [kg]	9 [4]	17 [8]	26 [12]	34 [15]	43 [20]	51 [23]	60 [27]	68 [31]	77 [35]	85 [39]	94 [43]	102 [46]	111 [50]	--	--	--	--	--	--	--	--
"A" length (code 5 spa.) inch [mm]	--	8.25 [209.6]	13.25 [336.6]	18.25 [463.6]	23.25 [590.6]	28.25 [717.6]	33.25 [844.6]	38.25 [971.6]	43.25 [1098.6]	48.25 [1225.6]	53.25 [1352.6]	58.25 [1479.6]	63.25 [1606.6]	68.25 [1733.6]							
apx. weight alum lb [kg]	--	9 [4]	15 [7]	20 [9]	25 [11]	30 [14]	35 [16]	41 [19]	46 [21]	50 [23]	55 [25]	60 [27]	65 [29]	71 [32]							
apx. weight ferrous lb [kg]	--	22 [10]	36 [16]	49 [22]	62 [28]	76 [34]	89 [40]	102 [46]	116 [53]	--	--	--	--	--							

Port code	Valve mtg.	Manifold mtg.
P, S	0.25-20 UNC x 0.75 [19] DP	0.31-18 UNC x 0.44 [11.1] DP
B, M, T	M6 ISO 6H x 0.75 [19] DP	M8 ISO 6H x 0.44 [11.1] DP

* Length of 01 station with relief cavity is 4.50 [114.3]. Gauge port not available on 01 station.

Ordering Information

Material	Valve Pattern	Circuit	No. of Stations	Valve Spacing	Port Threads	Options																																															
<table border="1"> <thead> <tr> <th>Material</th> </tr> </thead> <tbody> <tr> <td>A Aluminum - 6061-T6 3000† psi • 20.7 MPa</td> </tr> <tr> <td>D Ductile Iron - D4512 5000† psi • 34.5 MPa</td> </tr> <tr> <td>S* Stainless Steel - 17-4 5000† psi • 34.5 MPa</td> </tr> </tbody> </table> <p>† Working pressure should be considered in accordance with ISO 4413 to determine appropriate material type.</p> <p>*All stainless steel products are passivated.</p>	Material	A Aluminum - 6061-T6 3000† psi • 20.7 MPa	D Ductile Iron - D4512 5000† psi • 34.5 MPa	S* Stainless Steel - 17-4 5000† psi • 34.5 MPa	<table border="1"> <thead> <tr> <th>Valve Pattern</th> </tr> </thead> <tbody> <tr> <td>D05 ISO 4401-05-04 NFPA T3.5.1-D05 See Tech Information</td> </tr> </tbody> </table>	Valve Pattern	D05 ISO 4401-05-04 NFPA T3.5.1-D05 See Tech Information	<table border="1"> <thead> <tr> <th>Circuit</th> </tr> </thead> <tbody> <tr> <td>P Parallel Circuit Standard Flow</td> </tr> </tbody> </table>	Circuit	P Parallel Circuit Standard Flow	<table border="1"> <thead> <tr> <th>No. of Stations</th> </tr> </thead> <tbody> <tr> <td>Aluminum</td> </tr> <tr> <td>01...21 Available with spacing code 3</td> </tr> <tr> <td>02...14 Available with spacing code 5</td> </tr> <tr> <td>Ductile Iron</td> </tr> <tr> <td>01...12 Available with spacing code 3</td> </tr> <tr> <td>02...09 Available with spacing code 5</td> </tr> <tr> <td>Stainless Steel</td> </tr> <tr> <td>01...06 Available with spacing code 3</td> </tr> <tr> <td>02...04 Available with spacing code 5</td> </tr> </tbody> </table>	No. of Stations	Aluminum	01...21 Available with spacing code 3	02...14 Available with spacing code 5	Ductile Iron	01...12 Available with spacing code 3	02...09 Available with spacing code 5	Stainless Steel	01...06 Available with spacing code 3	02...04 Available with spacing code 5	<table border="1"> <thead> <tr> <th>Valve Spacing</th> </tr> </thead> <tbody> <tr> <td>3 3.25 inch 82.6 mm</td> </tr> <tr> <td>5 5.00 inch 127.0 mm</td> </tr> </tbody> </table>	Valve Spacing	3 3.25 inch 82.6 mm	5 5.00 inch 127.0 mm	<table border="1"> <thead> <tr> <th>Port Threads</th> <th>P & T</th> <th>A & B</th> <th>GA</th> </tr> </thead> <tbody> <tr> <td>P* NPTF • ANSI B1.20.3</td> <td>0.75</td> <td>0.50</td> <td>0.25</td> </tr> <tr> <td>S SAE • ISO 11926</td> <td>-12</td> <td>-8</td> <td>-6</td> </tr> <tr> <td>B BSPP • ISO 1179</td> <td>0.75</td> <td>0.50</td> <td>none</td> </tr> <tr> <td>M ISO • ISO 6149</td> <td>M27</td> <td>M18</td> <td>none</td> </tr> <tr> <td>T* BSPT • ISO 7</td> <td>0.75</td> <td>0.50</td> <td>none</td> </tr> </tbody> </table>	Port Threads	P & T	A & B	GA	P* NPTF • ANSI B1.20.3	0.75	0.50	0.25	S SAE • ISO 11926	-12	-8	-6	B BSPP • ISO 1179	0.75	0.50	none	M ISO • ISO 6149	M27	M18	none	T* BSPT • ISO 7	0.75	0.50	none	<table border="1"> <thead> <tr> <th>Options</th> </tr> </thead> <tbody> <tr> <td>See next page for available options and ordering codes.</td> </tr> </tbody> </table>	Options	See next page for available options and ordering codes.
Material																																																					
A Aluminum - 6061-T6 3000† psi • 20.7 MPa																																																					
D Ductile Iron - D4512 5000† psi • 34.5 MPa																																																					
S* Stainless Steel - 17-4 5000† psi • 34.5 MPa																																																					
Valve Pattern																																																					
D05 ISO 4401-05-04 NFPA T3.5.1-D05 See Tech Information																																																					
Circuit																																																					
P Parallel Circuit Standard Flow																																																					
No. of Stations																																																					
Aluminum																																																					
01...21 Available with spacing code 3																																																					
02...14 Available with spacing code 5																																																					
Ductile Iron																																																					
01...12 Available with spacing code 3																																																					
02...09 Available with spacing code 5																																																					
Stainless Steel																																																					
01...06 Available with spacing code 3																																																					
02...04 Available with spacing code 5																																																					
Valve Spacing																																																					
3 3.25 inch 82.6 mm																																																					
5 5.00 inch 127.0 mm																																																					
Port Threads	P & T	A & B	GA																																																		
P* NPTF • ANSI B1.20.3	0.75	0.50	0.25																																																		
S SAE • ISO 11926	-12	-8	-6																																																		
B BSPP • ISO 1179	0.75	0.50	none																																																		
M ISO • ISO 6149	M27	M18	none																																																		
T* BSPT • ISO 7	0.75	0.50	none																																																		
Options																																																					
See next page for available options and ordering codes.																																																					

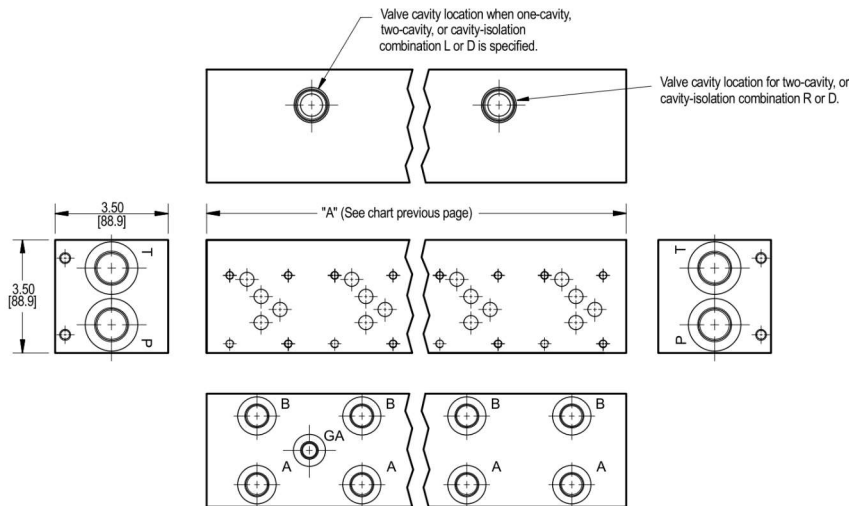
* Pipe ports in stainless can experience galling

In order to constantly improve the quality of our products, we retain the right to make changes to the products and specifications at any time without prior notice.

Customers have the responsibility continuously check all the information on all data sheets.

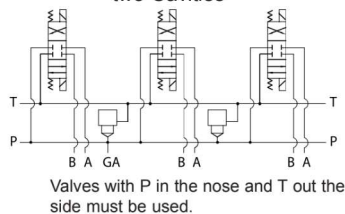


Options - D05 Standard Flow Parallel Manifold

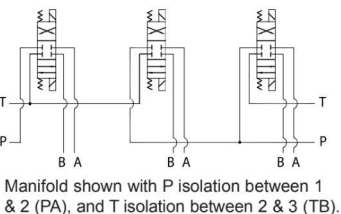


ISOLATIONS		
Hoyea isolation options allow a manifold to have two independent pressure and/or tank ports. Isolations are drilled rather than plugged to ensure a leakproof and failproof isolation.		
Ordering code letter:	* Isolation is between stations:	Available # of stations:
3.25 [82.6] spacing		
A	01 & 02	02-10
B	02 & 03	03-11
C	03 & 04	04-12
D	04 & 05	05-13
E	05 & 06	06-14
F	06 & 07	07-15
G	07 & 08	08-16
H	08 & 09	09-17
J	09 & 10	10-18
5.00 [127.0] spacing		
A	01 & 02	02-07
B	02 & 03	03-08
C	03 & 04	04-09
D	04 & 05	05-10
E	05 & 06	06-11
F	06 & 07	07-12

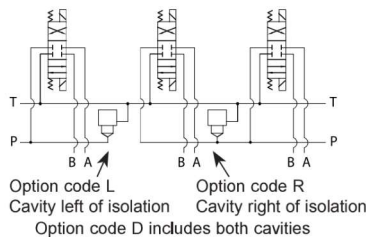
Parallel Circuit with one or two Cavities



Parallel Circuit with Isolations



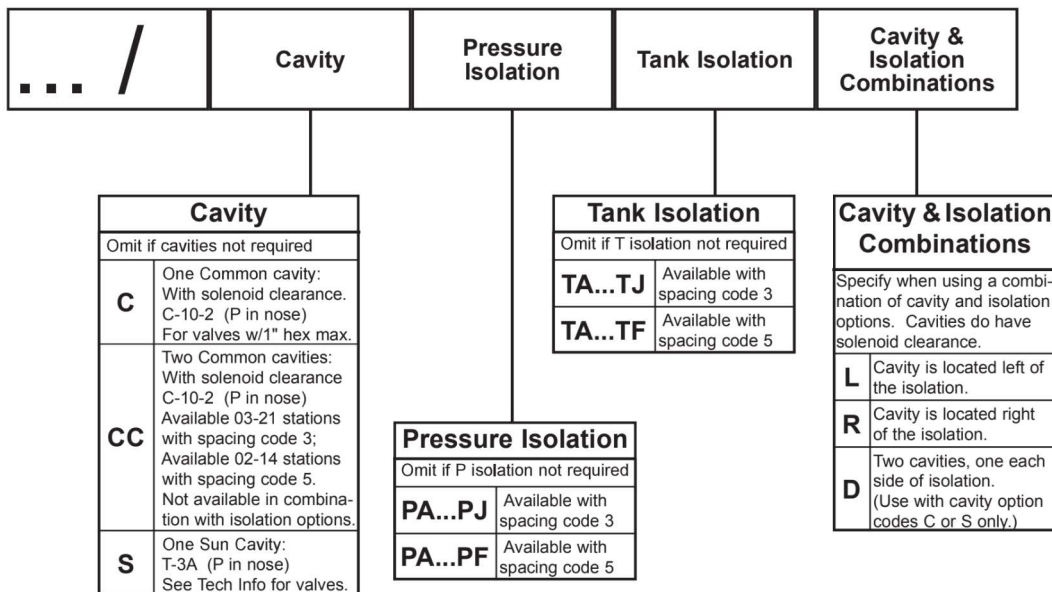
Cavity & Isolation Combinations



* Stations are numbered left to right.

- NOTES:**
- 1) The GA port is not available on a (1) station manifold.
 - 2) The GA port is not available when a pressure isolation is located between stations 1 & 2.
 - 3) Some cavity and isolation combinations are not possible with spacing code 3. Consult factory to determine availability.

Ordering Information



In order to constantly improve the quality of our products, we retain the right to make changes to the products and specifications at any time without prior notice.

Customers have the responsibility continuously check all the information on all data sheets.