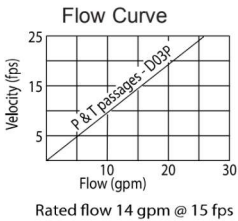
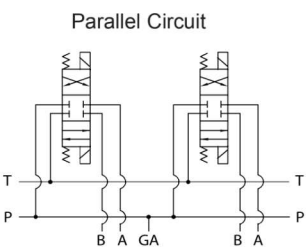
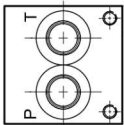
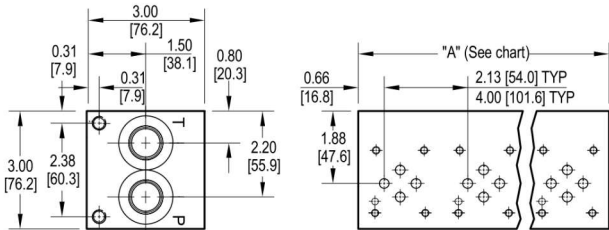




D03 Standard Flow Parallel Circuit Manifold



All mounting hardware is supplied, except for stainless.

No. of stations	* 01	02	03	04	05	06	07	08	09	10	11	12	13	14	15	16	17	18	19	20
"A" length (code 2 spa.) inch [mm]	2.13 [54.0]	4.25 [108.0]	6.38 [162.1]	8.50 [215.9]	10.63 [270.0]	12.75 [323.9]	14.88 [378.0]	17.00 [431.8]	19.13 [485.9]	21.25 [539.9]	23.38 [593.9]	25.50 [647.7]	27.63 [701.8]	29.75 [755.7]	31.88 [809.8]	34.00 [853.6]	36.13 [917.6]	38.25 [971.6]	40.38 [1025.5]	42.50 [1079.5]
apx. weight alum lb [kg]	3 [1]	4 [2]	6 [3]	8 [4]	9 [4]	11 [5]	12 [5]	14 [6]	16 [7]	18 [8]	20 [9]	21 [10]	22 [10]	24 [11]	26 [12]	27 [12]	29 [13]	31 [14]	32 [15]	34 [15]
apx. weight ferrous lb [kg]	5 [2]	9 [4]	13 [6]	17 [8]	21 [10]	26 [12]	30 [14]	34 [15]	38 [17]	42 [19]	47 [21]	51 [23]	55 [25]	59 [27]	63 [29]	68 [31]	--	--	--	--
"A" length (code 4 spa.) inch [mm]	--	6.13 [155.7]	10.13 [257.3]	14.13 [358.9]	18.13 [460.5]	22.13 [562.1]	26.13 [663.7]	30.13 [765.3]	34.13 [866.9]	38.13 [968.5]	42.13 [1070.1]	46.13 [1171.7]	50.13 [1273.3]	54.13 [1374.9]	58.13 [1476.5]	62.13 [1578.1]				
apx. weight alum lb [kg]	--	6 [3]	9 [4]	12 [5]	15 [7]	19 [9]	22 [10]	25 [11]	29 [13]	32 [15]	36 [16]	39 [18]	42 [19]	46 [21]	49 [22]	53 [24]				
apx. weight ferrous lb [kg]	--	12 [5]	20 [9]	28 [13]	36 [16]	45 [20]	53 [24]	61 [28]	69 [31]	77 [35]	85 [39]	93 [42]	102 [46]	110 [50]	118 [54]	126 [57]				

* Length of 01 station with relief cavity is 3.00 [76.2]. Gauge port not available on 01 station.

Port code	Valve mtg.	Manifold mtg.
P, S	#10-24 UNC x 0.63 [16] DP	0.31-18 UNC x 0.44 [11.1] DP
B, M, T	M5 ISO 6H x 0.63 [16] DP	M8 ISO 6H x 0.44 [11.1] DP

Ordering Information

Material	Valve Pattern	Circuit	No. of Stations	Valve Spacing	Port Threads	Options
Material A Aluminum - 6061-T6 3000† psi • 20.7 MPa D Ductile Iron - D4512 5000† psi • 34.5 MPa S* Stainless Steel - 17-4 5000† psi • 34.5 MPa † Working pressure should be considered in accordance with ISO 4413 to determine appropriate material type. *All stainless steel products are passivated.	Valve Pattern D03 ISO 4401-03-02 NFFPA T3.5.1-D03 See Tech Information	Circuit P Parallel Circuit Standard Flow	No. of Stations Aluminum 01...20 Available with spacing code 2 02...16 Available with spacing code 4 Ductile Iron 01...16 Available with spacing code 2 02...16 Available with spacing code 4 Stainless Steel 01...09 Available with spacing code 2 02...05 Available with spacing code 4	Valve Spacing 2 2.13 inch 54.0 mm 4 4.00 inch 101.6 mm	Port Threads P* NPTF • ANSI B1.20.3 S SAE • ISO 11926 B BSPP • ISO 1179 M ISO • ISO 6149 T* BSPT • ISO 7 P & T 0.50 A & B 0.38 GA 0.25 -10 -8 -6 M22 M18 none 0.50 0.38 none	Options See next page for available options and ordering codes.

* Pipe ports in stainless can experience galling

In order to constantly improve the quality of our products, we retain the right to make changes to the products and specifications at any time without prior notice.

Customers have the responsibility continuously check all the information on all data sheets.

