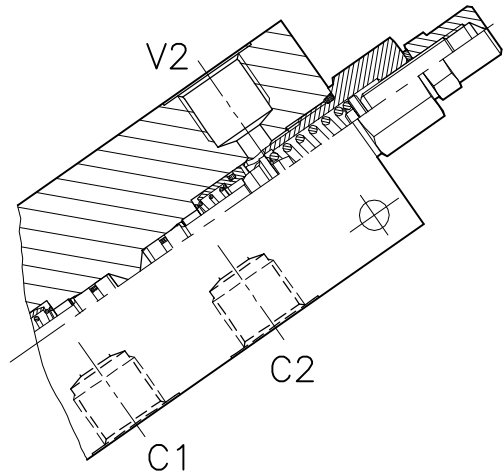
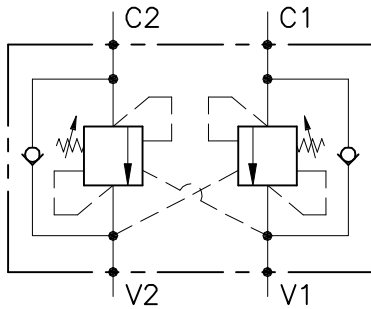


# OWC-DE-...-LU-...

VALVOLA BILANCIAMENTO, BLOCCO E CONTROLLO MOVIMENTO A DOPPIO EFFETTO CON COLLETTORE IN LINEA  
DOUBLE COUNTERBALANCE VALVE WITH IN LINE BODY



## CARATTERISTICHE

Luce nominale min/max  
Portata min/max  
Pressione di lavoro max.  
Pressione max. di taratura  
Rapporto di pilotaggio standard  
Temperatura ambiente  
Temperatura olio  
Filtraggio consigliato  
Coppia di serraggio  
Peso

**DN 6/8/10**  
**1/60 l/min - 0.26/15.9 GPM**  
**350 bar - 5075 PSI**  
**350 bar - 5075 PSI**  
**4.25 : 1**  
**-30°C + 50°C**  
**-30°C + 80°C**  
**30 micron**

## PERFORMANCE

Min/max rated size  
Min/max flow-rate  
Max working pressure  
Max setting pressure  
Standard pilot ratio  
Room temperature  
Oil temperature  
Recommended filtration  
Tightening torque  
Weight

### NOTE:

La taratura deve essere **1.3** volte maggiore della pressione indotta dal carico.

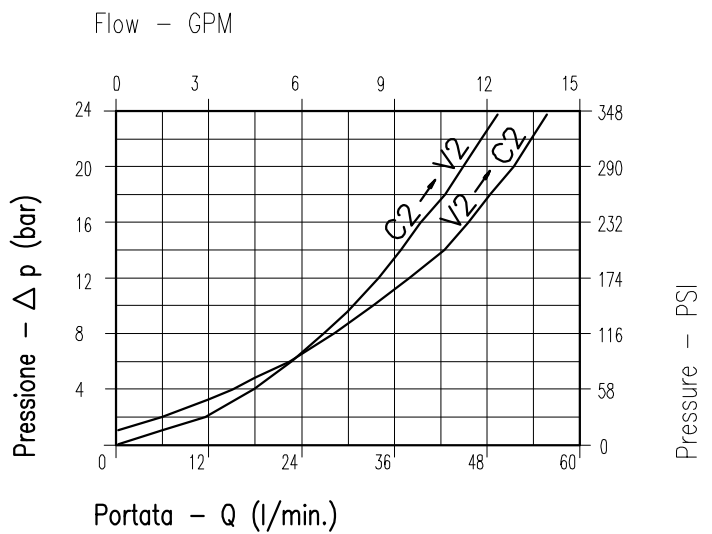
Valve should be set at **1.3** times load induced pressure.

### ESEMPIO/EXAMPLE:

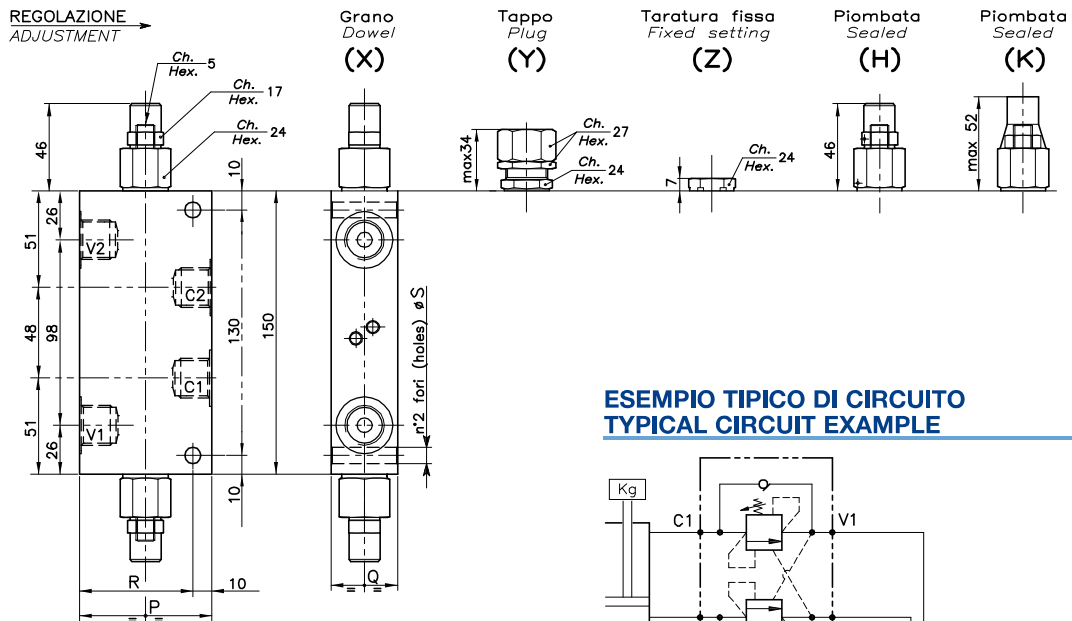
Pressione di lavoro max:

Max working pressure:

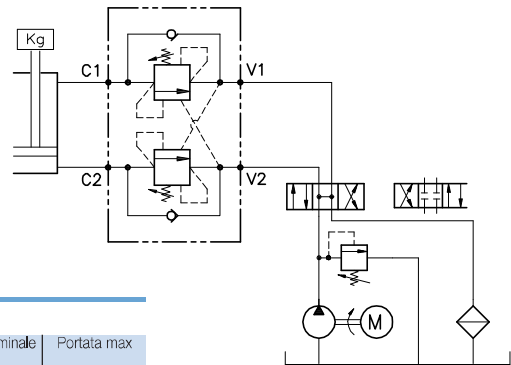
**350 bar / 1.3 = 270 bar**



Viscosità olio 46 cSt a 50°C  
Oil viscosity 46 cSt at 50°C



**ESEMPIO TIPICO DI CIRCUITO  
TYPICAL CIRCUIT EXAMPLE**



**DIMENSIONI  
DIMENSIONS**

Campo taratura Setting range		P	Q	R	S	Attacchi Port size V2-C2 V1-C1 GAS (BSPP)	Luce nominale Rated size DN	Portata max Max flow-rate l/min - GPM
107	106	60	30	50	6.5	1/4"	6	20-5
055	005	60	30	50	6.5	3/8"	8	40-10
060	010	70	35	60	8.5	1/2"	10	60-15

**CODICE DI ORDINAZIONE  
HOW TO ORDER**

001 107 0 X 0

Campo taratura / Setting range		Rapporto di pilotaggio Pilot ratios		Regolazione Adjustment	
107	106	O	4,25 : 1	X	Grano - Dowel
055	005	D	8 : 1	Y	Tappo - Plug
060	010			Z	Taratura fissa - Fixed setting
Campo taratura 30÷220 bar (molla colore verde) Setting range 30÷220 bar (green spring)	Campo taratura 60÷350 bar (molla colore giallo) Setting range 60÷350 bar (yellow spring)			H	Piombata - Sealed
Taratura standard (Q=5 l/1') Std. bar setting (Q=5 l/1') 220 bar	Incr. press. - bar giro/vite Pressure rise - turn of screw (56)			K	Piombata - Sealed
Taratura standard (Q=5 l/1') Std. bar setting (Q=5 l/1') 350 bar	Incr. press. - bar giro/vite Pressure rise - turn of screw (138)				