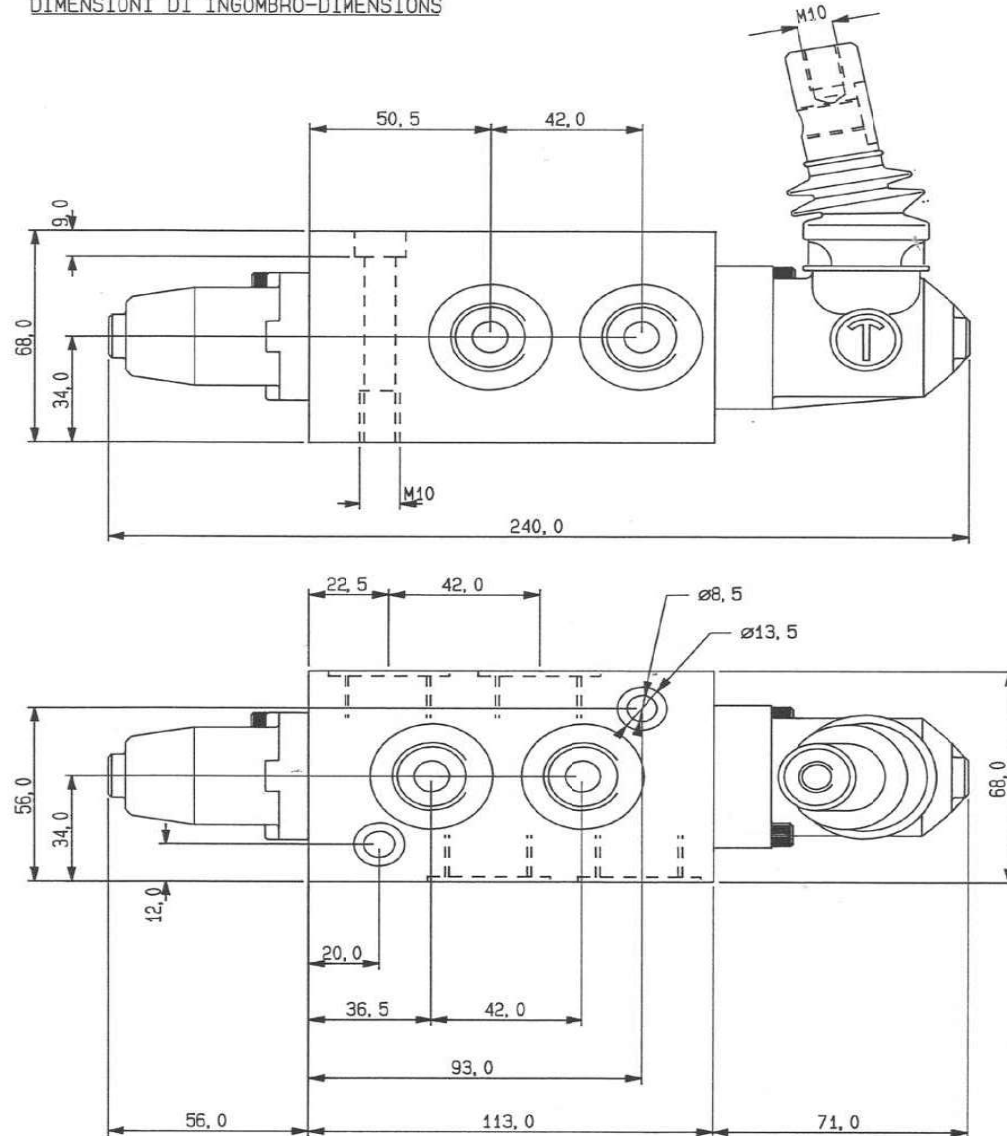


MDF10-12/6/2 POSIZIONI

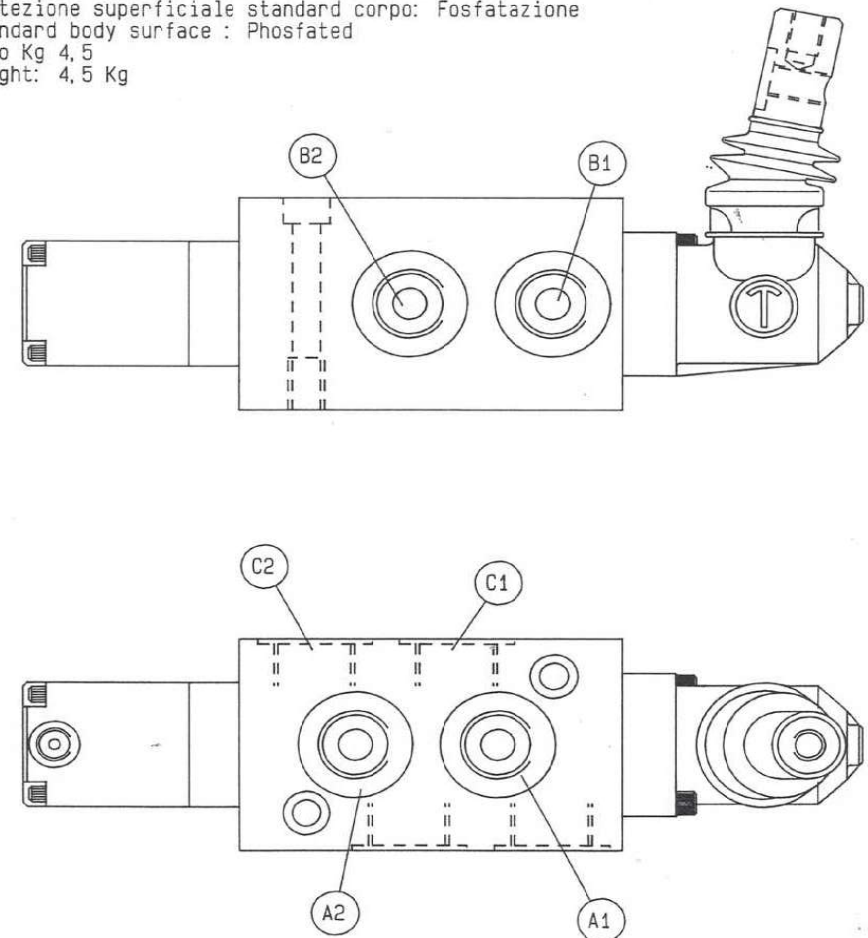
COMANDO A LEVA

DIMENSIONI DI INGOMBRO-DIMENSIONS

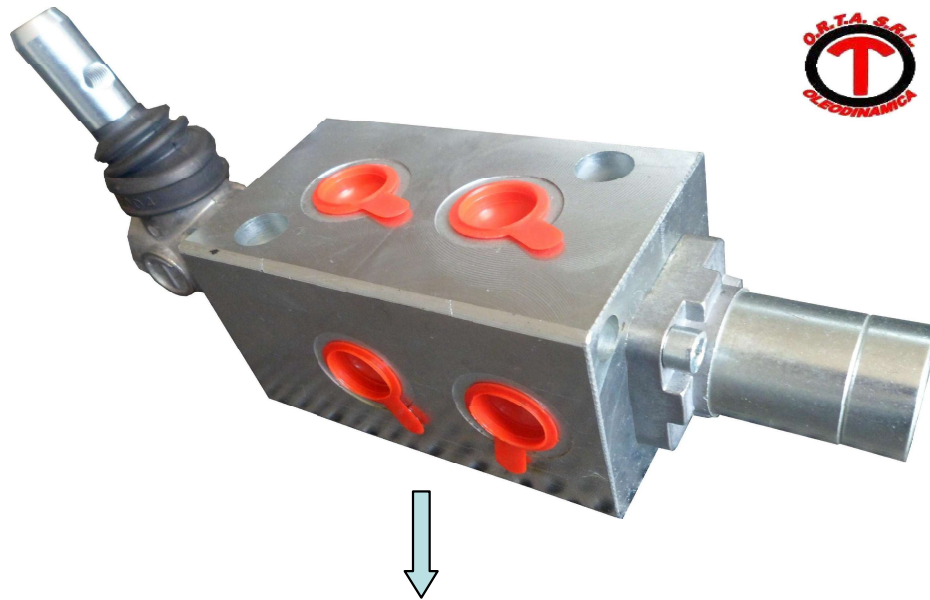


COMANDO PNEUMATICO

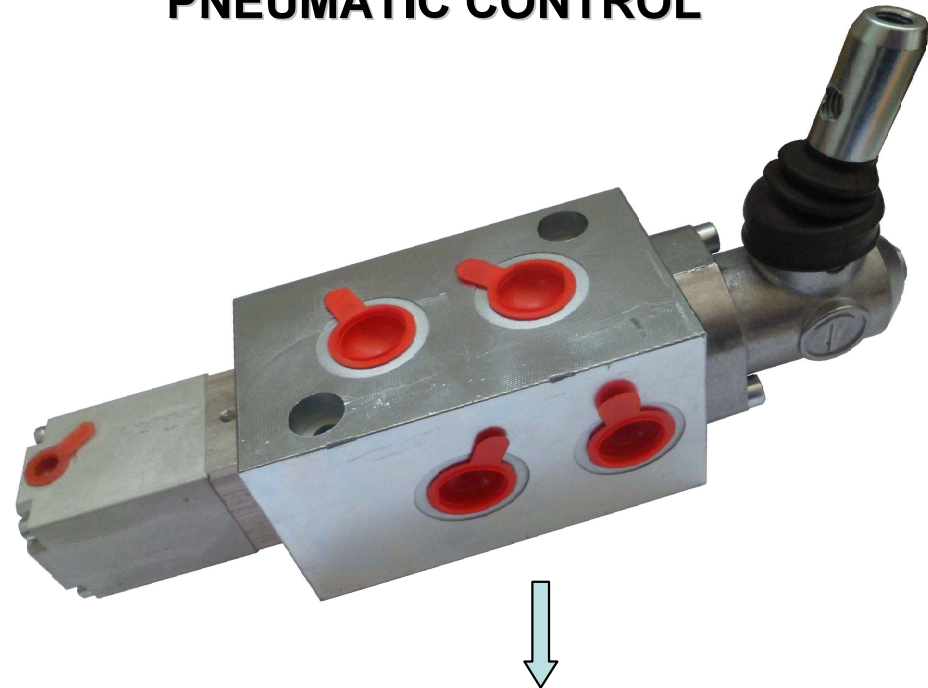
Fornito completo di asta leva M10 con impugnatura l=260 mm
 Supplied with handle M10 and knob l=260 mm
 Protezione superficiale standard corpo: Fosfatazione
 Standard body surface : Phosfated
 Peso Kg 4,5
 Weight: 4,5 Kg



Tutti gli attacchi sono da 1/2" BSP-All ports are 1/2" BSP
 Portata massima: 75 lt/min (1,25 Dm/sec)
 Maximum flow: 75 lt/min (1,25 Dm/sec)
 Pressione di esercizio: 210 bar (21 Mpa)
 Exercise pressure: 210 bar (21 Mpa)
 Pressione minima pilot: 4 bar
 Pressione max pilot: 20 bar

LEVER CONTROL

MDF10-6-2-00-413
MDF10 =1/2 " BSP THREAD
6=NUMBER OF WAYS
00=LEVER CONTROL
413=DETEND 2 POSITIONS

PNEUMATIC CONTROL

MDF10-6-2-PP-213
MDF10 =1/2 " BSP THREAD
6=NUMBER OF WAYS
PP=PNEUMATIC CONTROL
213=SPRING COME BACK