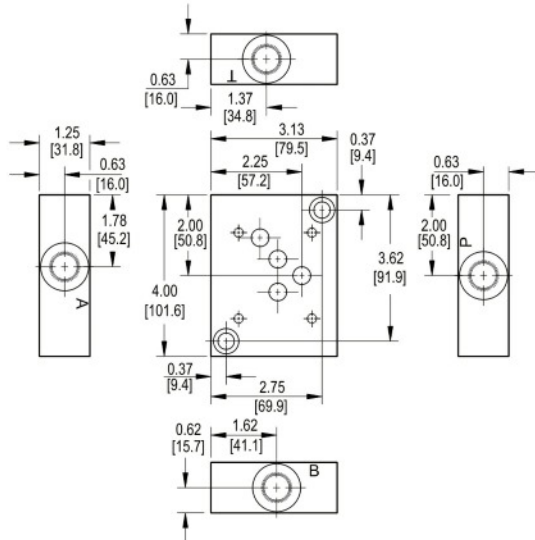


# D05 Subplates

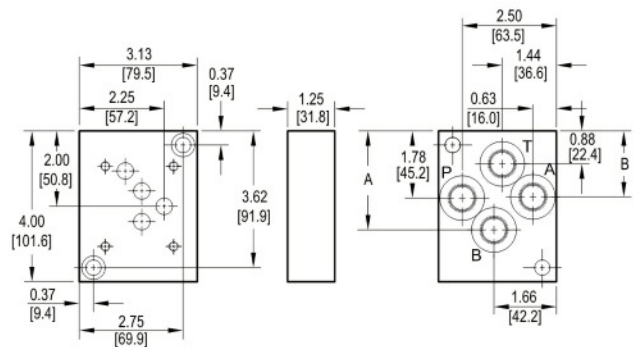
## Side Ported Subplate

Valve mtg: UNC 0.25-20 x 0.75 DP or  
Metric M6-1.0mm ISO 6H x [19.1] DP  
Subplate hardware kit is supplied.  
See page 134 for itemized list.



## Back Ported Subplate

Valve mtg: UNC 0.25-20 x 0.75 DP or  
Metric M6-1.0mm ISO 6H x [19.1] DP  
Subplate hardware kit is supplied.  
See page 134 for itemized list.



Dimension	A	B
*D05SPB6P	2.63 [66.8]	1.75 [44.5]
*D05SPB8B	2.94 [74.6]	2.00 [50.8]
*D05SPB8[M,P,S,T]	2.63 [66.8]	1.75 [44.5]

## Ordering Information

Material		Valve Pattern		Product Type		Port Location		Port Threads	
A	Aluminum - 6061-T6 3000† psi • 20.7 MPa	D05	ISO 4401-05-04 NFA T3.5.1-D05 See Tech Information	SP	Subplate	S	Side ported	6P	0.38-18 NPTF ANSI B1.20.3
	D								
† Working pressure should be considered in accordance with ISO 4413 to determine appropriate material type.						B		8S	
								-8 SAE ISO 11926; SAE 1926	
								8B	
								0.50-14 BSPP ISO 1179; BS 2779	
								8M	
								M18 x 1.5 ISO 6149	
								8T	
								0.50-14 BSPT ISO 7; BS 21	

For coating options  
see pages 245-246.

In order to constantly improve the quality of our products, we retain the right to make changes to the products and specifications at any time without prior notice.

Customers have the responsibility to continuously check all the information on all data sheets.