[illegible]

## Ordering Information

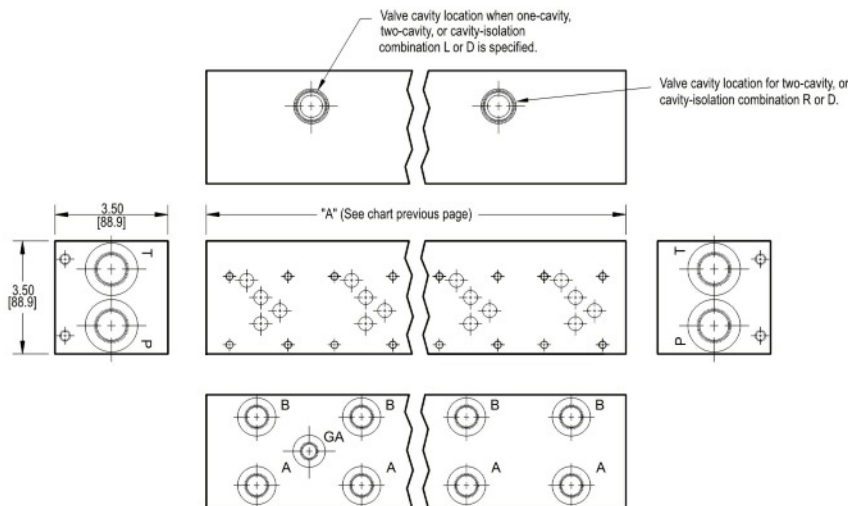
Material	Valve Pattern	Circuit	No. of Stations	Valve Spacing	Port Threads	/	Options
----------	---------------	---------	-----------------	---------------	--------------	---	---------

Port Threads		P & T	A & B	GA
<b>P*</b>	NPTF • ANSI B1.20.3	0.75	0.50	0.25
<b>S</b>	SAE • ISO 11926	-12	-8	-6
<b>B</b>	BSPP • ISO 1179	0.75	0.50	none
<b>M</b>	ISO • ISO 6149	M27	M18	none
<b>T*</b>	BSPT • ISO 7	0.75	0.50	none

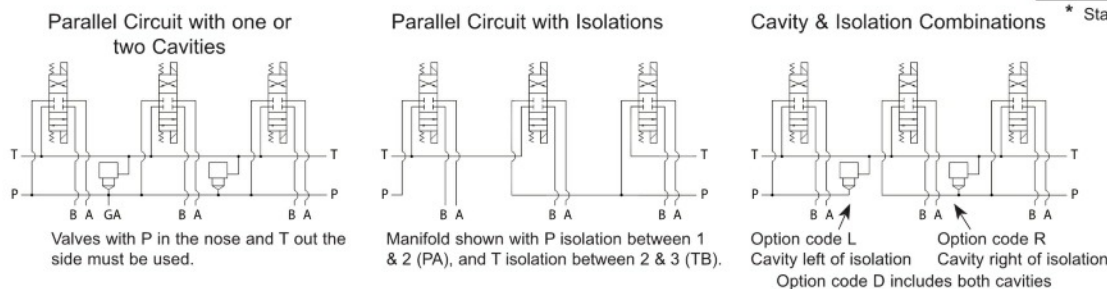
24



# Options - D05 Standard Flow Parallel Manifold



ISOLATIONS		
Hoyea isolations allow for a manifold to have two independent pressure and/or tank ports. Isolations are drilled rather than plugged to ensure a leakproof and failproof isolations		
Ordering code letter:	* Isolation is between stations:	Available # of stations:
3.25 [82.6] spacing		
A	01 & 02	02-10
B	02 & 03	03-11
C	03 & 04	04-12
D	04 & 05	05-13
E	05 & 06	06-14
F	06 & 07	07-15
G	07 & 08	08-16
H	08 & 09	09-17
J	09 & 10	10-18
5.00 [127.0] spacing		
A	01 & 02	02-07
B	02 & 03	03-08
C	03 & 04	04-09
D	04 & 05	05-10
E	05 & 06	06-11
F	06 & 07	07-12



## Ordering Information

...	Cavity	Pressure Isolation	Tank Isolation	Cavity & Isolation Combinations																														
<table border="1"> <tr> <th colspan="2">Cavity</th><th colspan="2">Tank Isolation</th><th>Cavity &amp; Isolation Combinations</th></tr> <tr> <td colspan="2">Omit if cavities not required</td><td colspan="2">Omit if T isolation not required</td><td>Specify when using a combination of cavity and isolation options. Cavities do have solenoid clearance.</td></tr> <tr> <td>C</td><td>One Common cavity: With solenoid clearance. C-10-2 (P in nose) For valves w/1" hex max.</td><td>TA...TJ</td><td>Available with spacing code 3</td><td>L Cavity is located left of the isolation.</td></tr> <tr> <td>CC</td><td>Two Common cavities: With solenoid clearance C-10-2 (P in nose) Available 03-21 stations with spacing code 3; Available 02-14 stations with spacing code 5. Not available in combination with isolation options.</td><td>TA...TF</td><td>Available with spacing code 5</td><td>R Cavity is located right of the isolation.</td></tr> <tr> <td>S</td><td>One Sun Cavity: T-3A (P in nose) See Tech Info for valves.</td><td>PA...PJ</td><td>Available with spacing code 3</td><td>D Two cavities, one each side of isolation. (Use with cavity option codes C or S only.)</td></tr> <tr> <td></td><td></td><td>PA...PF</td><td>Available with spacing code 5</td><td></td></tr> </table>					Cavity		Tank Isolation		Cavity & Isolation Combinations	Omit if cavities not required		Omit if T isolation not required		Specify when using a combination of cavity and isolation options. Cavities do have solenoid clearance.	C	One Common cavity: With solenoid clearance. C-10-2 (P in nose) For valves w/1" hex max.	TA...TJ	Available with spacing code 3	L Cavity is located left of the isolation.	CC	Two Common cavities: With solenoid clearance C-10-2 (P in nose) Available 03-21 stations with spacing code 3; Available 02-14 stations with spacing code 5. Not available in combination with isolation options.	TA...TF	Available with spacing code 5	R Cavity is located right of the isolation.	S	One Sun Cavity: T-3A (P in nose) See Tech Info for valves.	PA...PJ	Available with spacing code 3	D Two cavities, one each side of isolation. (Use with cavity option codes C or S only.)			PA...PF	Available with spacing code 5	
Cavity		Tank Isolation		Cavity & Isolation Combinations																														
Omit if cavities not required		Omit if T isolation not required		Specify when using a combination of cavity and isolation options. Cavities do have solenoid clearance.																														
C	One Common cavity: With solenoid clearance. C-10-2 (P in nose) For valves w/1" hex max.	TA...TJ	Available with spacing code 3	L Cavity is located left of the isolation.																														
CC	Two Common cavities: With solenoid clearance C-10-2 (P in nose) Available 03-21 stations with spacing code 3; Available 02-14 stations with spacing code 5. Not available in combination with isolation options.	TA...TF	Available with spacing code 5	R Cavity is located right of the isolation.																														
S	One Sun Cavity: T-3A (P in nose) See Tech Info for valves.	PA...PJ	Available with spacing code 3	D Two cavities, one each side of isolation. (Use with cavity option codes C or S only.)																														
		PA...PF	Available with spacing code 5																															

In order to constantly improve the quality of our products, we retain the right to make changes to the products and specifications at any time without prior notice.

Customers have the responsibility to continuously check all the information on all data sheets.