

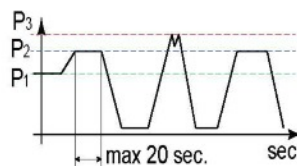
**Unidirectional Pump - LV serie "KUMA"**

EUROPEAN STANDARD PUMP

ø36,5 FLANGE - TAPERED SHAFT - STANDARD EUROPEAN PORT

**LV-2**

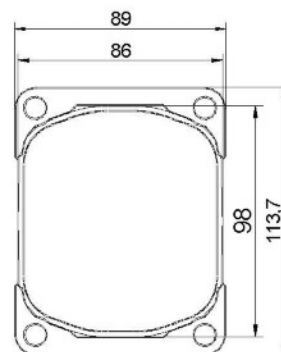
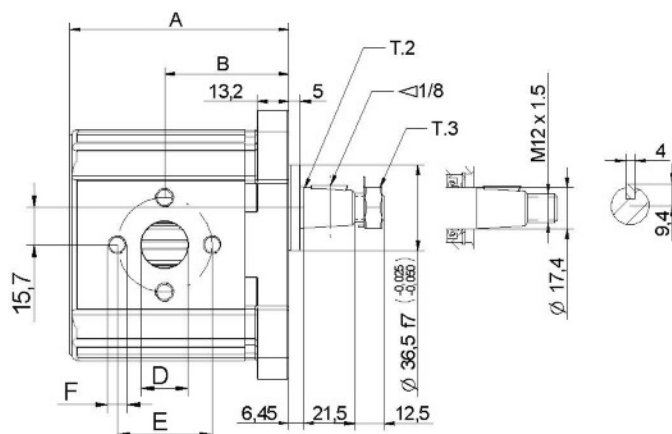
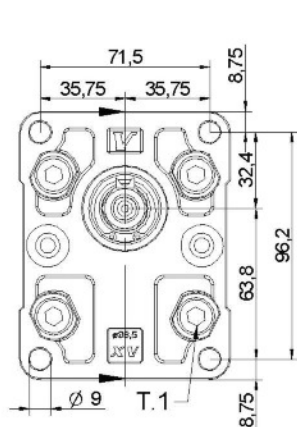
TYPE	Displacement cm <sup>3</sup> /rev	Max. Pressure			Min speed rpm	Max speed rpm
		P1 (bar)	P2 (bar)	P3 (bar)		
LV-2P/04	4,20	240	260	280	700	3500
LV-2P/06	6,00	240	260	280	700	3500
LV-2P/09	8,40	240	260	280	700	3500
LV-2P/11	10,80	240	260	280	700	3500
LV-2P/14	14,40	230	250	270	700	3500
LV-2P/17	16,80	210	230	250	700	3500
LV-2P/19	19,20	190	210	230	700	3000
LV-2P/22	22,80	180	200	220	700	3000
LV-2P/26	26,20	150	170	190	700	3000
LV-2P/30	30,00	140	160	180	700	2500
LV-2P/34	34,20	130	150	170	700	2500
LV-2P/40	39,60	120	140	160	700	2000



P1 = Max. working pressure

P2 = Max. intermittent pressure

P3 = Max. peak pressure

**LP 207**

16/12/13 -DFC0F585ADF1C361D9.TMP

T.1 = 54 +58,9 [Nm] - screw tightening torque M 10

T.3 = 40 [Nm] - torque wrench setting 19

T.2 = 233,2 [Nm] - admissible shaft torque (N.B. When choosing a shaft, always check the admissible torque).

TYPE	Weight	A	B	D	D	CODE													
	kg	mm	mm	IN	OUT	Left Roatation								Right Rotation					
LV-2P/04	1,710	71,2	41,7	1/2" BSPP	1/2" BSPP	L	2P	41	01	E	BB	A	L	2P	41	02	E	BB	A
LV-2P/06	1,810	74,2	43,2	1/2" BSPP	1/2" BSPP	L	2P	43	01	E	BB	A	L	2P	43	02	E	BB	A
LV-2P/09	1,910	78,2	45,2	1/2" BSPP	1/2" BSPP	L	2P	45	01	E	BB	A	L	2P	45	02	E	BB	A
LV-2P/11	2,010	82,2	47,2	1/2" BSPP	1/2" BSPP	L	2P	47	01	E	BB	A	L	2P	47	02	E	BB	A
LV-2P/14	2,210	88,2	50,2	3/4" BSPP	1/2" BSPP	L	2P	49	01	E	CB	A	L	2P	49	02	E	CB	A
LV-2P/17	2,310	92,2	52,2	3/4" BSPP	1/2" BSPP	L	2P	51	01	E	CB	A	L	2P	51	02	E	CB	A
LV-2P/19	2,410	96,2	54,2	3/4" BSPP	1/2" BSPP	L	2P	53	01	E	CB	A	L	2P	53	02	E	CB	A
LV-2P/22	2,560	102,2	57,2	3/4" BSPP	1/2" BSPP	L	2P	55	01	E	CB	A	L	2P	55	02	E	CB	A
LV-2P/26	2,660	106,2	59,2	1" BSPP	3/4" BSPP	L	2P	57	01	E	DC	A	L	2P	57	02	E	DC	A
LV-2P/30	2,910	114,2	63,2	1" BSPP	3/4" BSPP	L	2P	59	01	E	DC	A	L	2P	59	02	E	DC	A
LV-2P/34	3,110	121,2	66,7	1" BSPP	3/4" BSPP	L	2P	61	01	E	DC	A	L	2P	61	02	E	DC	A
LV-2P/40	3,310	130,2	71,2	1" BSPP	3/4" BSPP	L	2P	63	01	E	DC	A	L	2P	63	02	E	DC	A