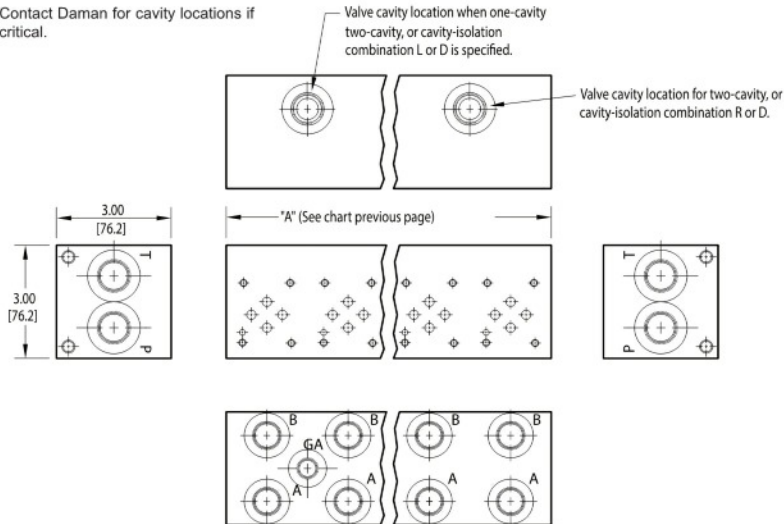


Options - D03 Standard Flow Parallel Manifold

Contact Daman for cavity locations if critical.



ISOLATIONS

Daman isolation options allow a manifold to have two independent pressure and/or tank ports. Isolations are drilled rather than plugged to ensure a leakproof and failproof isolation.

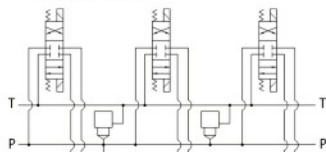
| Ordering code letter: | * Isolation is between stations: | Available # of stations: |
|-----------------------|----------------------------------|--------------------------|
| 2.125 [54.0] spacing | | |
| A | 01 & 02 | 02-14 |
| B | 02 & 03 | 03-15 |
| C | 03 & 04 | 04-16 |
| D | 04 & 05 | 05-17 |
| E | 05 & 06 | 06-18 |
| F | 06 & 07 | 07-19 |
| G | 07 & 08 | 08-20 |
| H | 08 & 09 | 09-20 |
| J | 09 & 10 | 10-20 |
| 4.00 [101.6] spacing | | |
| A | 01 & 02 | 02-10 |
| B | 02 & 03 | 03-11 |
| C | 03 & 04 | 04-12 |
| D | 04 & 05 | 05-13 |
| E | 05 & 06 | 06-14 |
| F | 06 & 07 | 07-15 |
| G | 07 & 08 | 08-16 |

* Stations are numbered left to right.

NOTES:

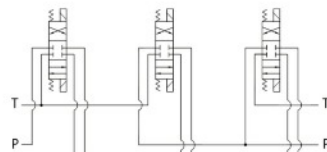
- 1) The GA port is not available on a (1) station manifold.
- 2) The GA port is not available when a pressure isolation is located between stations 1 & 2.
- 3) Some cavity and isolation combinations are not possible with spacing code 2. Consult factory to determine availability.

Parallel Circuit with one or two Cavities



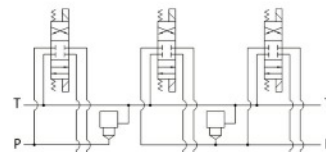
Valves with P in the nose and T out the side must be used.

Parallel Circuit with Isolations



Manifold shown with P isolation between 1 & 2 (PA), and T isolation between 2 & 3 (TB).

Cavity & Isolation Combinations



Option code L
Cavity left of isolation
Option code R
Cavity right of isolation
Option code D includes both cavities

Ordering Information

| ... | Cavity | Pressure Isolation | Tank Isolation | Cavity & Isolation Combinations | | | | | | | | | | | | | | | | | | | | | | | | | | | | | | | | | | | | |
|--|---|--------------------|----------------|---------------------------------|--|---|--|----|--|---|---|---|--------------------|--|----------------------------------|--|---------|----------------------------------|---------|----------------------------------|---|----------------|--|----------------------------------|--|---------|----------------------------------|---------|----------------------------------|--|---------------------------------|--|--|--|---|--|---|---|---|--|
| | <table><tr><th colspan="2">Cavity</th></tr><tr><td colspan="2">Omit if cavities not required</td></tr><tr><td>C</td><td>One Common cavity: No solenoid clearance. C-10-2 (P in nose) For valves w/1" hex max.</td></tr><tr><td>CC</td><td>Two Common cavities: With solenoid clearance C-10-2 (P in nose) Available 03-20 stations with spacing code 2; Available 02-16 stations with spacing code 4. Not available in combination with isolation options.</td></tr><tr><td>S</td><td>One Sun Cavity: T-10A (P in nose) See Tech Info for valves.</td></tr></table> | Cavity | | Omit if cavities not required | | C | One Common cavity: No solenoid clearance. C-10-2 (P in nose) For valves w/1" hex max. | CC | Two Common cavities: With solenoid clearance C-10-2 (P in nose) Available 03-20 stations with spacing code 2; Available 02-16 stations with spacing code 4. Not available in combination with isolation options. | S | One Sun Cavity: T-10A (P in nose) See Tech Info for valves. | <table><tr><th colspan="2">Pressure Isolation</th></tr><tr><td colspan="2">Omit if P isolation not required</td></tr><tr><td>PA...PJ</td><td>Available with spacing code 2</td></tr><tr><td>PA...PG</td><td>Available with spacing code 4</td></tr></table> | Pressure Isolation | | Omit if P isolation not required | | PA...PJ | Available with spacing code 2 | PA...PG | Available with spacing code 4 | <table><tr><th colspan="2">Tank Isolation</th></tr><tr><td colspan="2">Omit if T isolation not required</td></tr><tr><td>TA...TJ</td><td>Available with spacing code 2</td></tr><tr><td>TA...TG</td><td>Available with spacing code 4</td></tr></table> | Tank Isolation | | Omit if T isolation not required | | TA...TJ | Available with spacing code 2 | TA...TG | Available with spacing code 4 | <table><tr><th colspan="2">Cavity & Isolation Combinations</th></tr><tr><td colspan="2">Specify when using a combination of cavity and isolation options. Cavities do not have solenoid clearance.</td></tr><tr><td>L</td><td>Cavity is located left of the isolation.</td></tr><tr><td>R</td><td>Cavity is located right of the isolation.</td></tr><tr><td>D</td><td>Two cavities, one each side of isolation. (Use with cavity option codes C or S only.)</td></tr></table> | Cavity & Isolation Combinations | | Specify when using a combination of cavity and isolation options. Cavities do not have solenoid clearance. | | L | Cavity is located left of the isolation. | R | Cavity is located right of the isolation. | D | Two cavities, one each side of isolation. (Use with cavity option codes C or S only.) |
| Cavity | | | | | | | | | | | | | | | | | | | | | | | | | | | | | | | | | | | | | | | | |
| Omit if cavities not required | | | | | | | | | | | | | | | | | | | | | | | | | | | | | | | | | | | | | | | | |
| C | One Common cavity: No solenoid clearance. C-10-2 (P in nose) For valves w/1" hex max. | | | | | | | | | | | | | | | | | | | | | | | | | | | | | | | | | | | | | | | |
| CC | Two Common cavities: With solenoid clearance C-10-2 (P in nose) Available 03-20 stations with spacing code 2; Available 02-16 stations with spacing code 4. Not available in combination with isolation options. | | | | | | | | | | | | | | | | | | | | | | | | | | | | | | | | | | | | | | | |
| S | One Sun Cavity: T-10A (P in nose) See Tech Info for valves. | | | | | | | | | | | | | | | | | | | | | | | | | | | | | | | | | | | | | | | |
| Pressure Isolation | | | | | | | | | | | | | | | | | | | | | | | | | | | | | | | | | | | | | | | | |
| Omit if P isolation not required | | | | | | | | | | | | | | | | | | | | | | | | | | | | | | | | | | | | | | | | |
| PA...PJ | Available with spacing code 2 | | | | | | | | | | | | | | | | | | | | | | | | | | | | | | | | | | | | | | | |
| PA...PG | Available with spacing code 4 | | | | | | | | | | | | | | | | | | | | | | | | | | | | | | | | | | | | | | | |
| Tank Isolation | | | | | | | | | | | | | | | | | | | | | | | | | | | | | | | | | | | | | | | | |
| Omit if T isolation not required | | | | | | | | | | | | | | | | | | | | | | | | | | | | | | | | | | | | | | | | |
| TA...TJ | Available with spacing code 2 | | | | | | | | | | | | | | | | | | | | | | | | | | | | | | | | | | | | | | | |
| TA...TG | Available with spacing code 4 | | | | | | | | | | | | | | | | | | | | | | | | | | | | | | | | | | | | | | | |
| Cavity & Isolation Combinations | | | | | | | | | | | | | | | | | | | | | | | | | | | | | | | | | | | | | | | | |
| Specify when using a combination of cavity and isolation options. Cavities do not have solenoid clearance. | | | | | | | | | | | | | | | | | | | | | | | | | | | | | | | | | | | | | | | | |
| L | Cavity is located left of the isolation. | | | | | | | | | | | | | | | | | | | | | | | | | | | | | | | | | | | | | | | |
| R | Cavity is located right of the isolation. | | | | | | | | | | | | | | | | | | | | | | | | | | | | | | | | | | | | | | | |
| D | Two cavities, one each side of isolation. (Use with cavity option codes C or S only.) | | | | | | | | | | | | | | | | | | | | | | | | | | | | | | | | | | | | | | | |

MA Hydraulics Ltd Units 11-12 Ashley Estate Exmoor Avenue Scunthorpe North Lincolnshire DN15 8NJ

In order to constantly improve the quality of our products, we retain the right to make changes to the products and specifications at any time without prior notice.

Customers have the responsibility to continuously check all the information on all data sheets.