

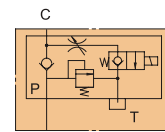
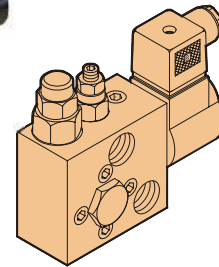


3/8" LINE MOUNTING LIFT VALVE

■ ORDERING CODE:

V2073 - A4 - * - 10

DESIGN NUMBER
 10:PT(Rc) THREADED CONNECTION
 1080:PF(G) THREADED CONNECTION
 1090:NPT THREADED CONNECTION
 OPTION:
 NONE:STANDARD
 OM:WITH MANUAL
 COIL TYPE:
 A1:AC100V(50/60Hz),AC110V(60Hz)
 A2:AC200V(50/60Hz),AC220V(60Hz)
 A3:AC110V(50Hz)
 A4:AC220V(50Hz)
 A5:AC240V(50Hz)
 A8:AC380V(50/60Hz)
 D1:DC12V
 D2:DC24V
 SERIES NUMBER



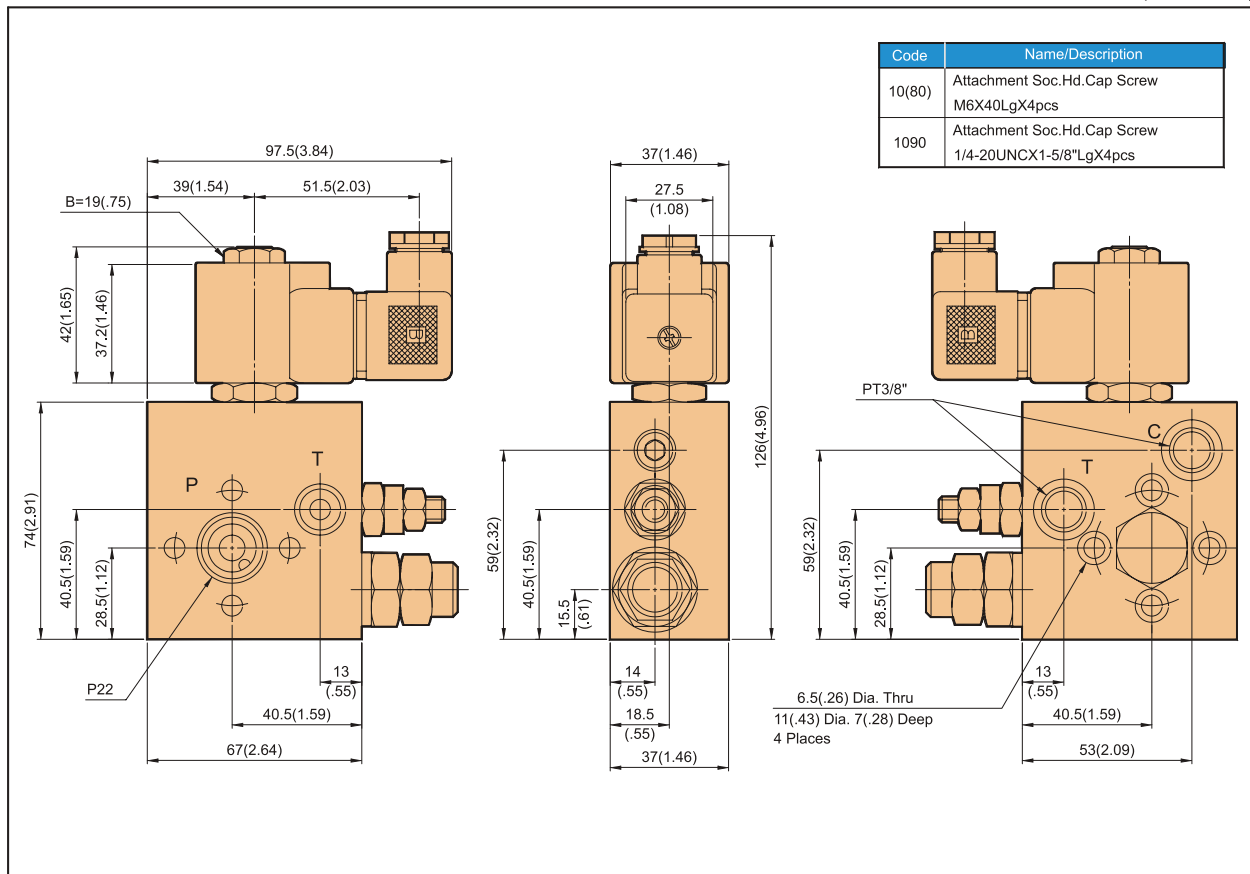
Graphic Symbol

■ RATINGS

V2073					
Normal Closed-NC Normal Open-NO	Max. Flow lpm(USgpm)	Max. Pres. bar(PSI)	Operating Temperature Range	Weight kg(lbs)	Terminations N:DIN 43650 Y:Lead Wires(2)
NC NO	20(5.28)	210(3000)	-20°C~120°C -4°F~248°F	0.7(1.54) With Coil	

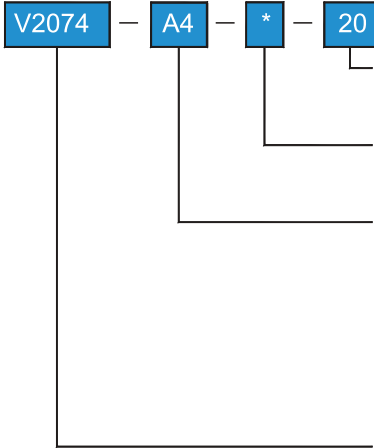
DIMENSIONS

MILLIMETERS (INCHES)

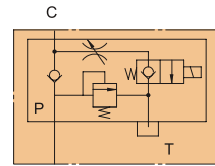
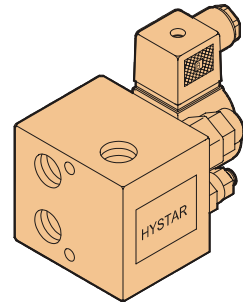


3/8" LINE MOUNTING LIFT VALVE

ORDERING CODE:



DESIGN NUMBER
 20:PT(Rc) THREADED CONNECTION
 2080:PF(G) THREADED CONNECTION
 2090:NPT THREADED CONNECTION
 OPTION:
 NONE:STANDARD
 OM:WITH MANUAL
 COIL TYPE:
 A1:AC100V(50/60Hz),AC110V(60Hz)
 A2:AC200V(50/60Hz),AC220V(60Hz)
 A3:AC110V(50Hz)
 A4:AC220V(50Hz)
 A5:AC240V(50Hz)
 A8:AC380V(50/60Hz)
 D1:DC12V
 D2:DC24V
 SERIES NUMBER



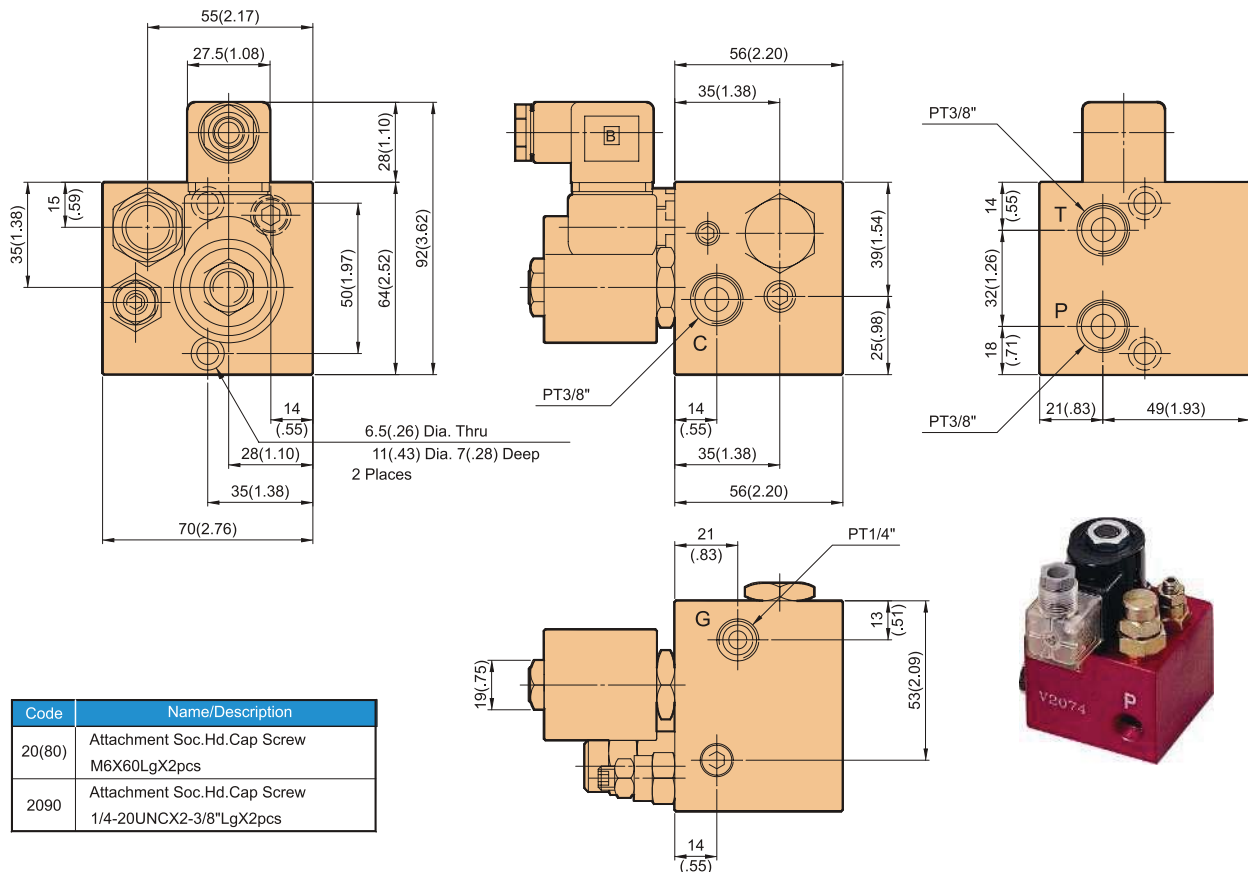
Graphic Symbol

RATINGS

V2074						
Normal Closed-NC Normal Open-NO		Max. Flow lpm(USgpm)	Max. Pres. bar(PSI)	Operating Temperature Range	Weight kg(lbs)	Terminations N:DIN 43650 Y:Lead Wires(2)
NC	NO	20(5.28)	210(3000)	-20°C~120°C -4°F~248°F	1.0(2.2) With Coil	

DIMENSIONS

MILLMETERS (INCHES)



Code	Name/Description
20(80)	Attachment Soc.Hd.Cap Screw M6X60LgX2pcs
2090	Attachment Soc.Hd.Cap Screw 1/4-20UNCX2-3/8"LgX2pcs





3/8" LINE MOUNTING LIFT VALVE

ORDERING CODE:

V2080 — **A4** — * — **3S** — **20**

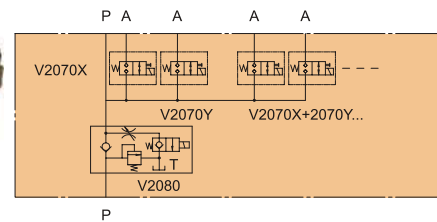
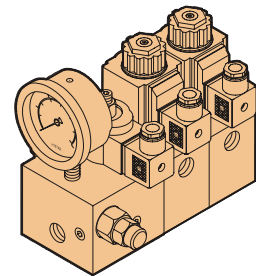
DESIGN NUMBER
 20:PT(Rc) THREADED CONNECTION
 2080:PF(G) THREADED CONNECTION
 2090:NPT THREADED CONNECTION

NUMBER OF STATION:
 1S:1 STATION 2S:2 STATIONS
 3S:3 STATIONS NS:N STATIONS

OPTION:
 NONE:STANDARD
 OM:WITH MANUAL

COIL TYPE:
 A1:AC100V(50/60Hz),AC110V(60Hz)
 A2:AC200V(50/60Hz),AC220V(60Hz)
 A3:AC110V(50Hz) A4:AC220V(50Hz)
 A5:AC240V(50Hz) A8:AC380V(50/60Hz)
 D1:DC12V D2:DC24V

SERIES NUMBER



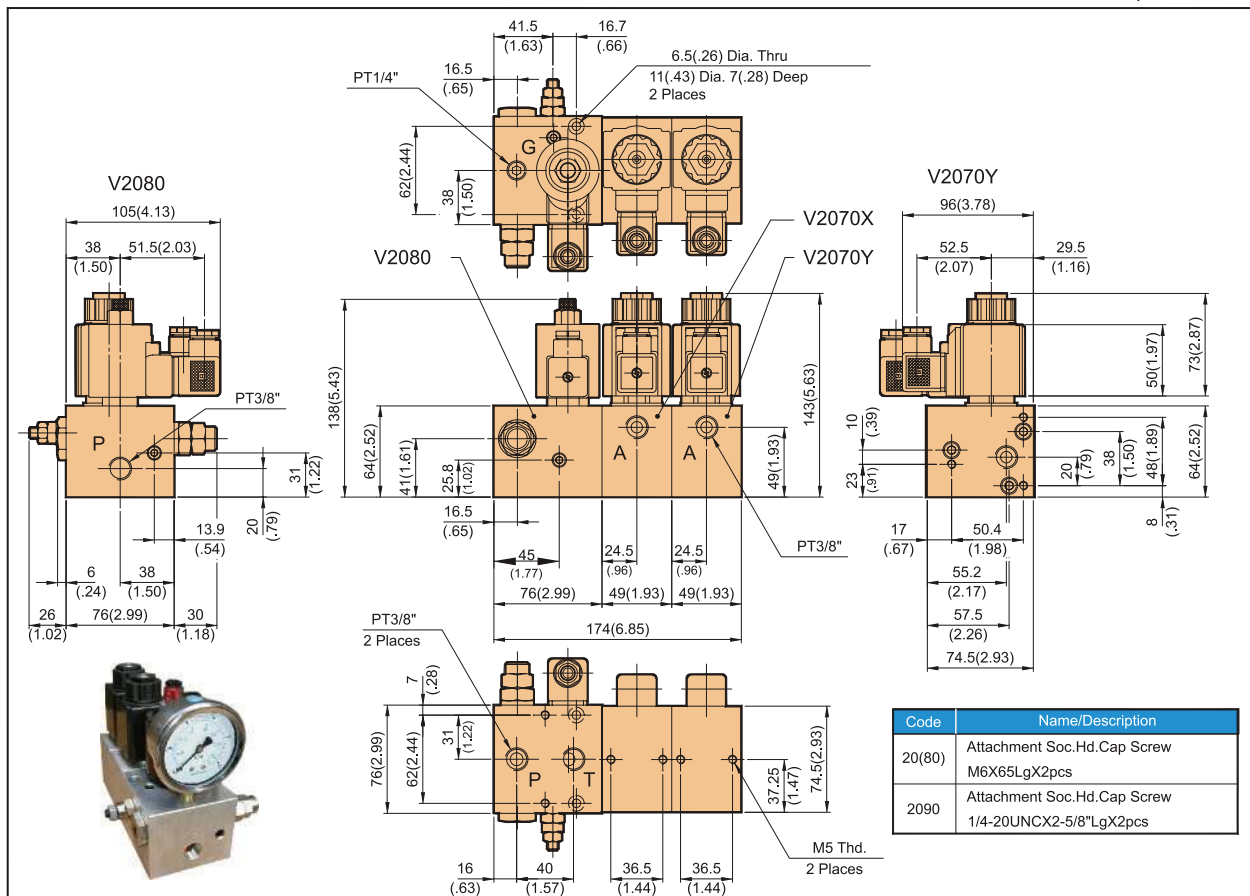
Graphic Symbol

RATINGS

V2080						
Normal Closed-NC Normal Open-NO		Max. Flow lpm(USgpm)	Max. Pres. bar(PSI)	Operating Temperature Range	Weight kg(lbs)	Terminations N:DIN 43650
NC	NO	20(5.28)	210(3000)	-20°C~120°C -4°F~248°F	1.5(3.3) With Coil	

DIMENSIONS

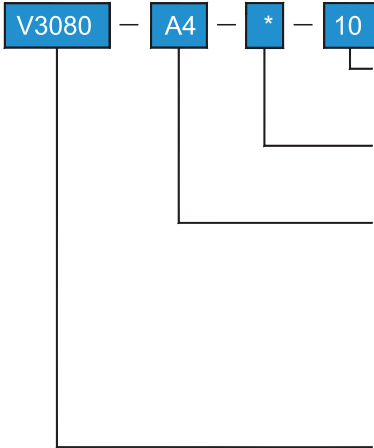
MILLIMETERS (INCHES)



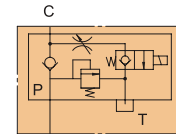
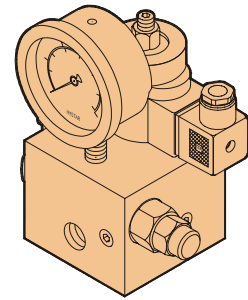
Code	Name/Description
20(80)	Attachment Soc.Hd.Cap Screw M6X65LgX2pcs
2090	Attachment Soc.Hd.Cap Screw 1/4-20UNCX2-5/8"LgX2pcs

3/8" LINE MOUNTING LIFT VALVE

ORDERING CODE:



DESIGN NUMBER
 10:PT(Rc) THREADED CONNECTION
 1080:PF(G) THREADED CONNECTION
 1090:NPT THREADED CONNECTION
 OPTION:
 NONE:STANDARD
 OM:WITH MANUAL
 COIL TYPE:
 A1:AC100V(50/60Hz),AC110V(60Hz)
 A2:AC200V(50/60Hz),AC220V(60Hz)
 A3:AC110V(50Hz)
 A4:AC220V(50Hz)
 A5:AC240V(50Hz)
 A8:AC380V(50/60Hz)
 D1:DC12V
 D2:DC24V
 SERIES NUMBER



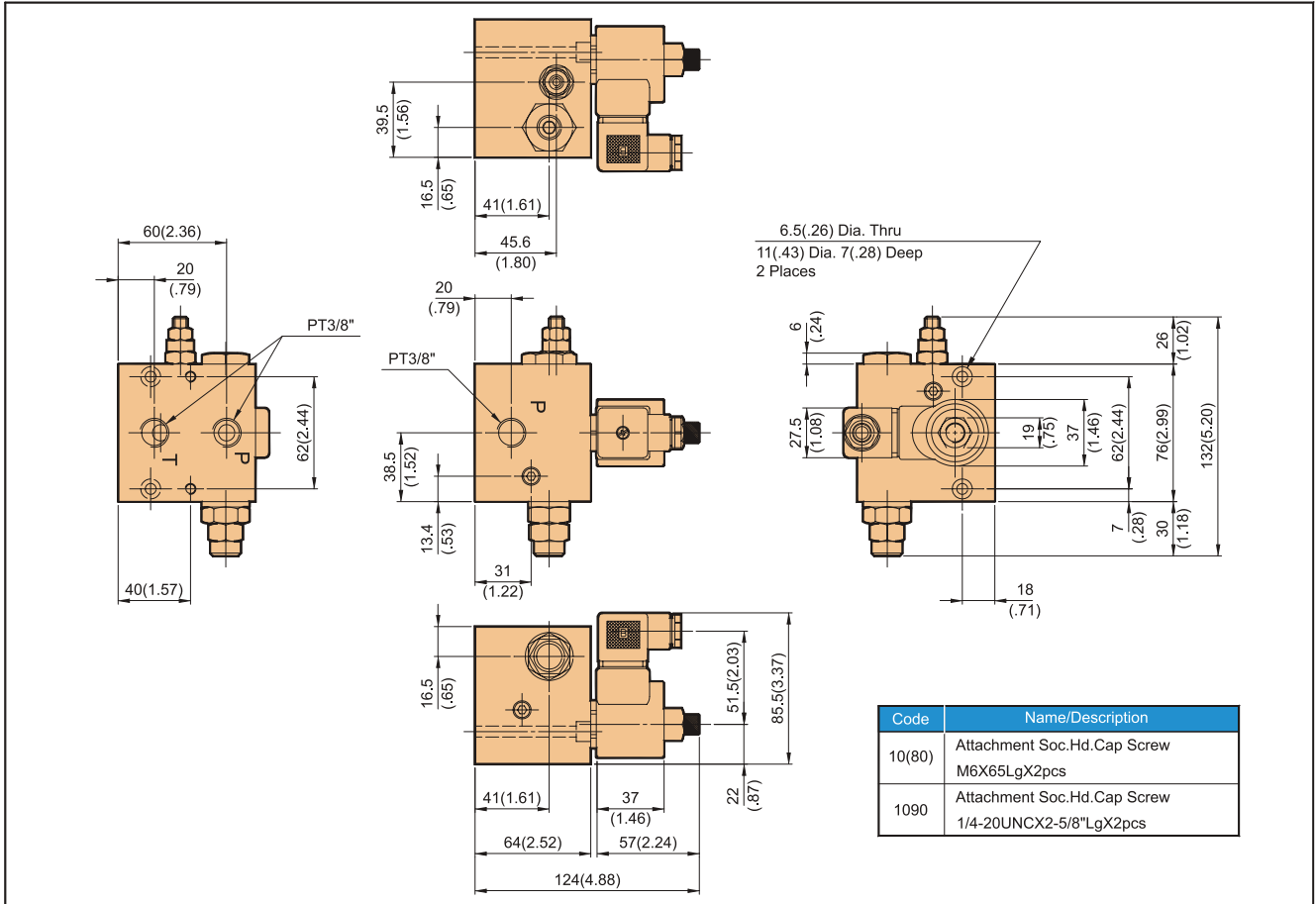
Graphic Symbol

RATINGS

V3080						
Normal Closed-NC Normal Open-NO		Max. Flow lpm(USgpm)	Max. Pres. bar(PSI)	Operating Temperature Range	Weight kg(lbs)	Terminations N:DIN 43650 Y:Lead Wires(2)
NC	NO	40(10.57)	210(3000)	-20°C~120°C -4°F~248°F	0.7(1.54) With Coil	

DIMENSIONS

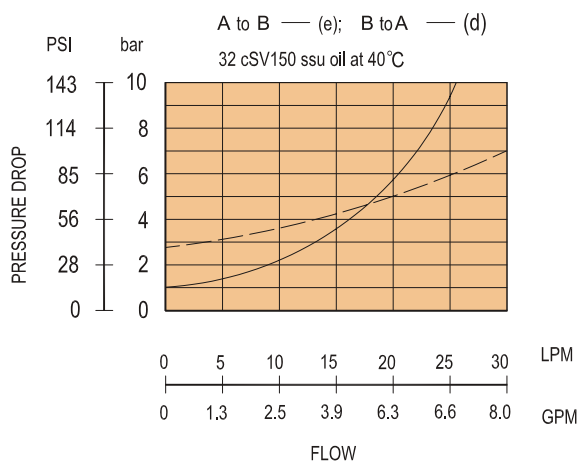
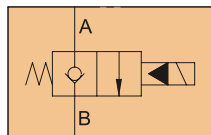
MILLIMETERS (INCHES)



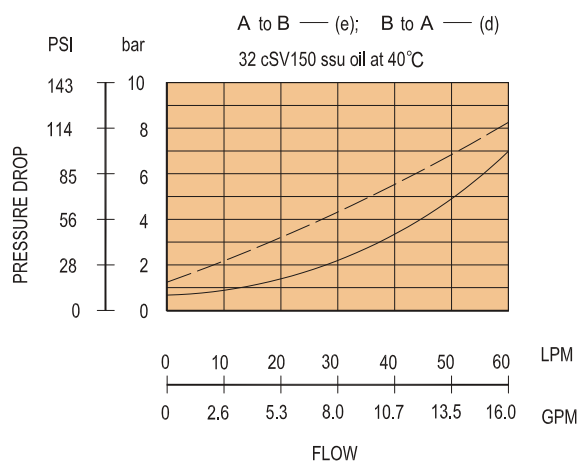
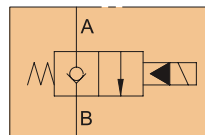


PRESSURE DROP

V2066



V3066



SOLENOID SPECIFICATIONS

V2066

Temperature 20°C

Current AC/DC	AC			DC	
	110V	220V	380V	12V	24V
In-rush Current(A)	0.18	0.11 / 0.09	0.07	1.15	0.70
Holding Current(A)	0.14	0.09 / 0.07	0.05	0.95	0.55

V3066

Temperature 20°C

Current AC/DC	AC		DC	
	110V	220V	12V	24V
In-rush Current(A)	0.22	0.14	-	0.80
Holding Current(A)	0.19	0.11	-	0.70

- Permissible Voltage: Rating Voltage $\pm 15\%$
- V2066, V3066 Filter: 196 μ

F