

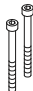

## DIMENSIONS

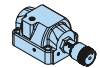
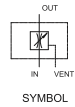
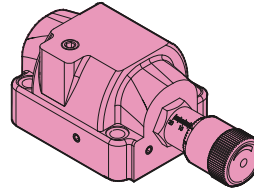
MILLIMETERS(INCHES)

### Flow Control Valves(Pressure compensated)-Subplate Type THF/SD/SF/SDF/SKF/SKFG-06/10 Series

#### Ordering Code

**THF** - **06** - **20**

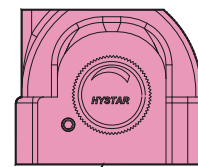
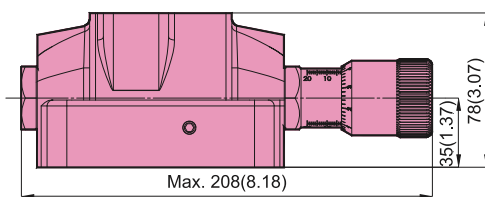
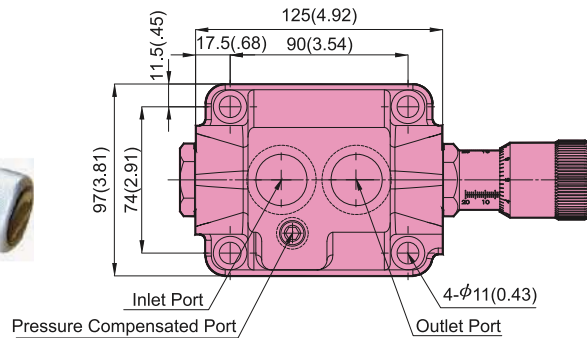
Series No	Valve Size	Design No
Flow Control Valve Pressure Compensated Sub-plate Type	06: (3/4")	20 DIN 912 bolts 
	10: (1-1/4")	2090 (North America) 



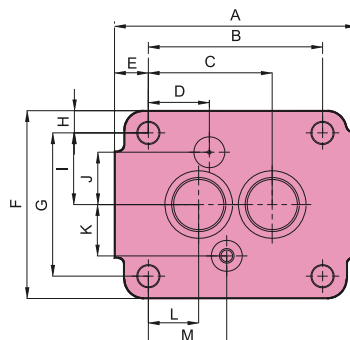
#### Valve Specifications & Attachment

Model	THF-06
Flow Rating	125 lpm (33 gpm)
Max. Pressure	250 bar (3600 psi)
Weight kg(lbs.)	5.5 (12.1)
CODE:20	M10X45LgX4pcs
CODE:2090	3/8-16UNCX1-3/4LgX4pcs

#### THF-06



INC.



Model	A	B	C	D	E	F	G	H	I	J	K	L	M
*** -06	125(4.92)	90(3.54)	64(2.51)	31.5(1.24)	17.5(.68)	97(3.81)	74(2.91)	11.5(.45)	37(1.45)	27(1.06)	26.5(1.04)	26(1.02)	40.5(1.59)
*** -10	150(5.90)	112(4.40)	78(3.07)	37.7(1.48)	19(.74)	116(4.56)	86(3.38)	15(.59)	43(1.69)	32(1.25)	32(1.25)	34(1.33)	46.5(1.83)



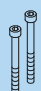
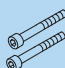
## DIMENSIONS

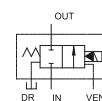
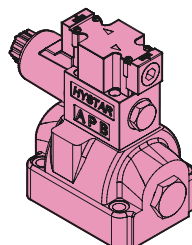
MILLIMETERS(INCHES)

### Solenoid Operated Flow Control Valves(Sub-Plate Type) SD Series

#### Ordering Code

**SD** - **06** - **20**

Series No	Valve Size	Design No
Solenoid Operated Flow Control Valve Sub-plate Type	06: (3/4")	20 DIN 912 bolts 
	10: (1-1/4")	2090 (North America) 



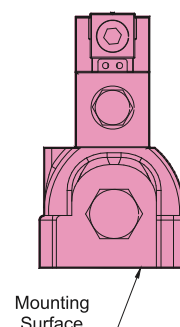
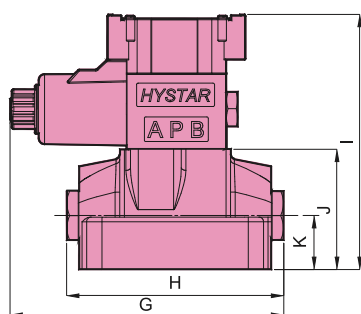
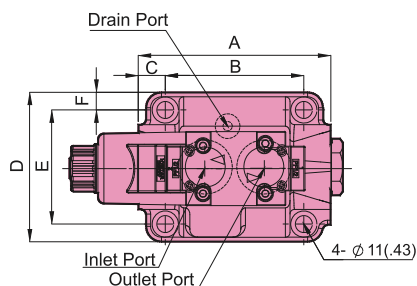
SYMBOL



#### Valve Specifications & Attachment

Model	SD-06	SD-10
Flow Rating	125 lpm (33 gpm)	240 lpm (63.4 gpm)
Max. Pressure	250 bar (3600 psi)	250 bar (3600 psi)
Weight kg(lbs.)	5.2 (11.4)	8.2 (18.1)
CODE:20	M10 X45LgX4pcs	M12X55LgX4pcs
CODE:2090	3/8-16UNCX1-3/4LgX4pcs	1/2-13UNCX2-1/4LgX4pcs
Surface O-Ring	P12X2pc, P29X2pc	P12X2pc, P34X2pc

### SD-06-10



■ Dimensions for subplate 06 & 10, reference page 269 for details.

■ Dimensions for models with Din connector, reference page 14 for details.

Model	A	B	C	D	E	F	G	H	I	J	K
SD-06	125(4.92)	90(3.54)	17.5(.69)	97(3.81)	74(2.91)	11.5(.45)	178(7.00)	141(5.55)	166(6.53)	78(3.07)	35(1.37)
SD-10	150(5.90)	112(4.40)	19(.74)	116(4.56)	86(3.38)	15(.59)	150(5.90)	166(6.53)	176(6.92)	88(3.46)	42(1.65)

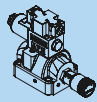
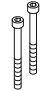

## DIMENSIONS

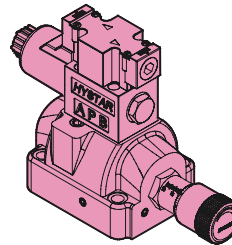
MILLIMETERS(INCHES)

### Solenoid Operated Throttle Valves(Pressure compensated)-Subplate Type SF Series

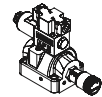
■ Ordering Code

**SF** - **06** - **20**

Series No	Valve Size	Design No
Solenoid Operated Throttle Valve Pressure Compensated Sub-plate Type 	06: (3/4")	20 DIN 912 bolts 
	10: (1-1/4")	2090 (North America) 



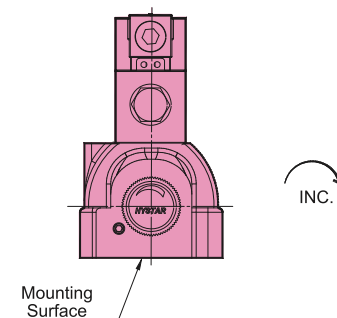
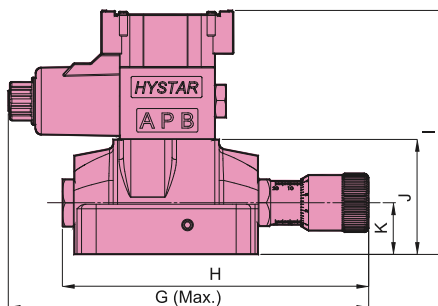
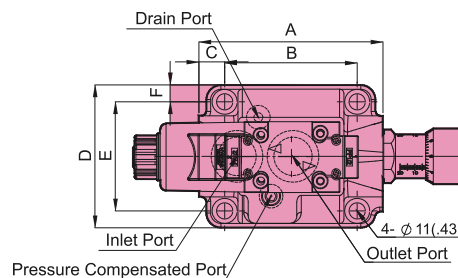
SYMBOL



■ Valve Specifications & Attachment

Model	SF-06	SF-10
Flow Rating	125 lpm (33 gpm)	240 lpm (63.4 gpm)
Max. Pressure	250 bar (3600 psi)	250 bar (3600 psi)
Weight kg(lbs.)	5.6 (12.3)	8.8 (19.3)
CODE:20	M10 X45LgX4pcs	M12X55LgX4pcs
CODE:2090	3/8-16UNCX1-3/4LgX4pcs	1/2-13UNCX2-1/4LgX4pcs
Surface O-Ring	P12X2pc, P29X2pc	P12X2pc, P34X2pc

SF-06-10



- Dimensions for subplate 06 & 10, reference page 269 for details.
- Dimensions for models with Din connector, reference page 14 for details.

Model	A	B	C	D	E	F	G	H	I	J	K
SF-06	125(4.92)	90(3.54)	17.5(.69)	97(3.81)	74(2.91)	11.5(.45)	245(9.64)	208(8.18)	166(6.53)	78(3.07)	35(1.37)
SF-10	150(5.90)	112(4.40)	19(.74)	116(4.56)	86(3.38)	15(.59)	281(11.0)	246(9.68)	176(6.92)	88(3.46)	42(1.65)