

Application:

- Heavy Duty Machinery
- Wheel Drives
- Material Handling
- Mining
- Agriculture
- Conveyors
- Door Openers and Swing Drives etc.

MLB Series brake is a wet disc hydraulic brake. The hydraulic disk brake is spring to apply the brake, and hydraulic pressure is required to release the brake.

Features:

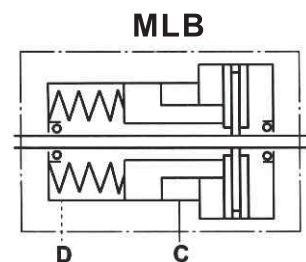
- MLB series adapt the advance friction disc and spring design: long life, low noise, high reliability.
- 4 Drainage tap, can use in different situation.
- Small volume, easy assembly.
- For flange attachment to MAP(H), MAR(S), MAS(E) series hydraulic motors.

In order to make the MLB series brakes working in optimal situation, we recommend the following:

Assembly	For fill oil after hydraulic motor assembly.
Fluid type	Mineral based-HM(GB/T763.2-87) (ISO6743/4) or HLP(DIN51524).
Temperature range	Normal -20℃ ~ 90℃ ; the best optimal situation 20℃ ~ 60℃
Viscosity range	20~75 mm ² /s ; the best optimal situation 42~74mm ² /s at 40℃
Filtration	Normal filtration of 25 micron, ISO code 20/16
Maintenance	Changed after the first 50~100h; then after every 500~1000h.

Specification

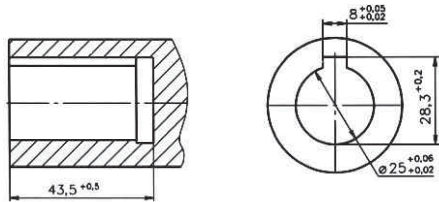
Description MLB	21	32	43
* Min. Static Torque [daNm]	20-22	31-34	41-45
Opening Pressure [bar]	min	17 - 23	
	max	300	
Min. Oil Quantity for Brake Releasing [cm ³]	7 - 8		
Oil Volume [cm ³]	50 - 120		
Max. Pressure in Drain Space [bar]	0 , 5		
Weight [Kg]	9		



Input Shaft Holes

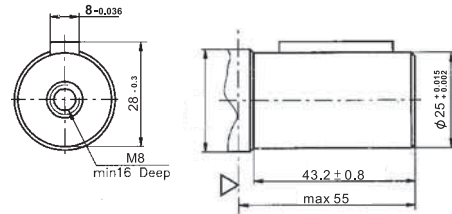
Output Shaft Extensions

C

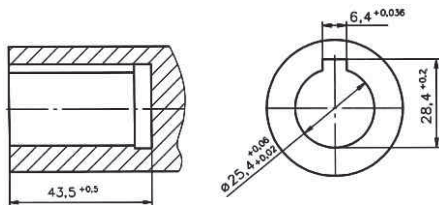


C

φ 25 Straight, Parallel key A8 x 7 x 32
Max. Torque 34 daNm

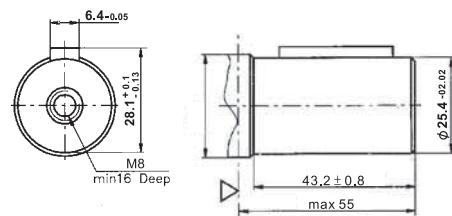


CO

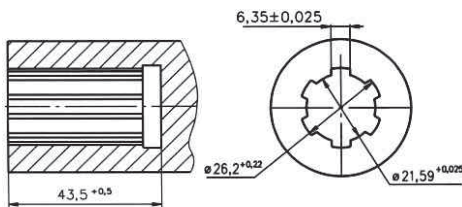


CO

φ 1" Straight, Parallel key 1/4" x 1/4" x 1/4" Bs46
Max. Torque 34 daNm

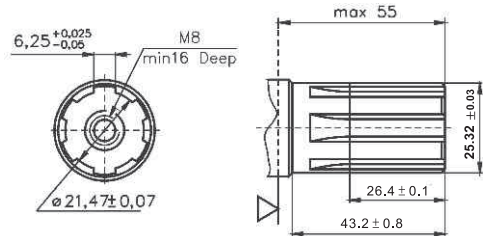


S

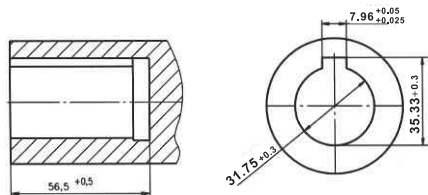


S

Splined BS2059 (SAE 6B)
Max. Torque 40 daNm

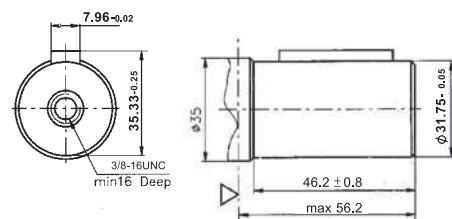


C1

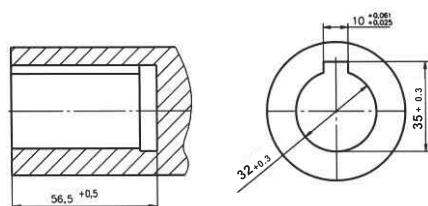


C1

φ 1 1/4" Straight, Parallel key 5/16" x 5/16" x 1 1/4"
Max. Torque 77 daNm

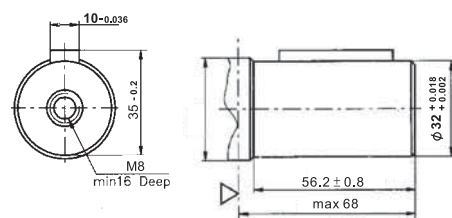


C2

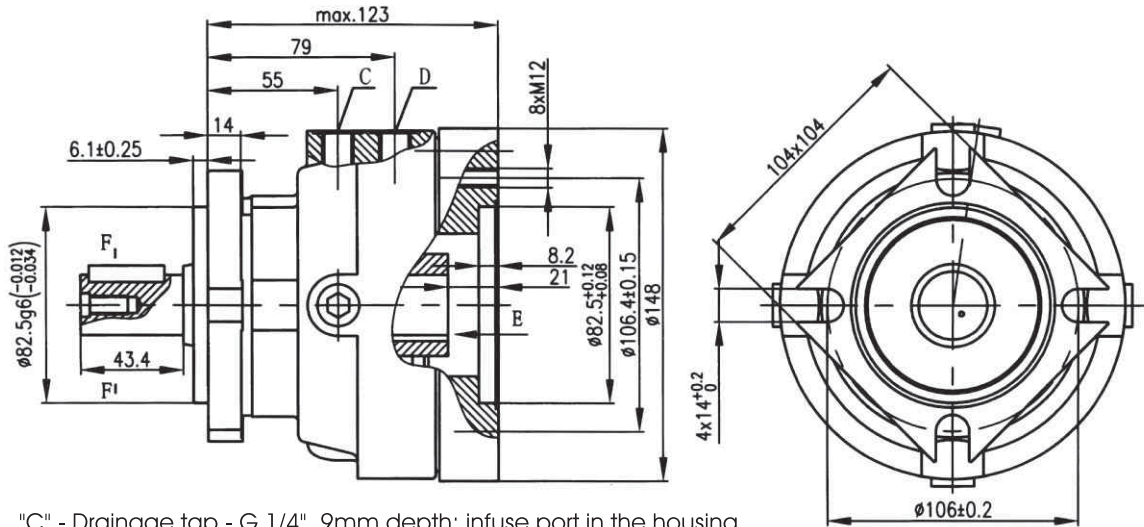


C2

φ 32 Straight, Parallel key A10 x 8 x 45
Max. Torque 77 daNm

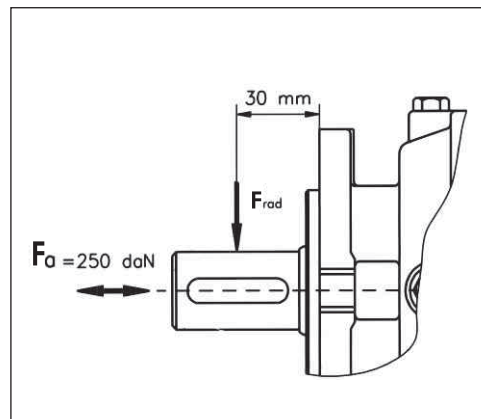
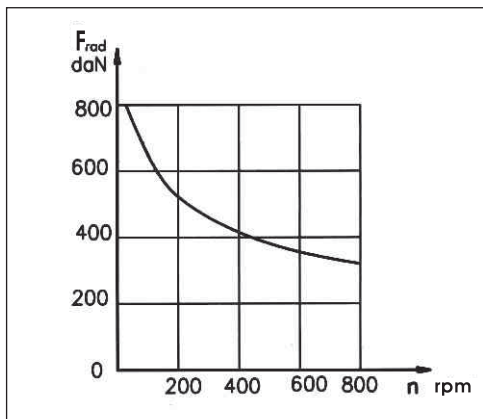


Dimensions and Mounting Data for MLB



"C" - Drainage tap - G 1/4", 9mm depth; infuse port in the housing.

"D" - Brake release port - G 1/4" 9mm depth.



Ordering Information for MLB

MLB	1	2	3	4	5
	-				

Pos.1 Input Shaft Holes

C, CO, S, C1, C2

Pos.2 Static Torque Code (See Specification Data)

21, 32, 43

Pos.3 Output Shaft Extensions

- C** - ϕ 25 Parallel key A8 x 7 x 32
- CO** - ϕ 1" Straight, Parallel Key 1/4" X 1/4" X 1 1/4"
- S** - ϕ 25, 32 Splined(SAE 6B)
- C1** - ϕ 1 1/4" Straight Parallel Key 5/16" x 5/16" x 1 1/4"
- C2** - ϕ 32 Straight Parallel Key A10 x 8 x 45

Pos.4 Option (Paint)*

Omit - Grey

B - Black

00 - No Painting

Pos.5 Painting

Omit - Factory Specified