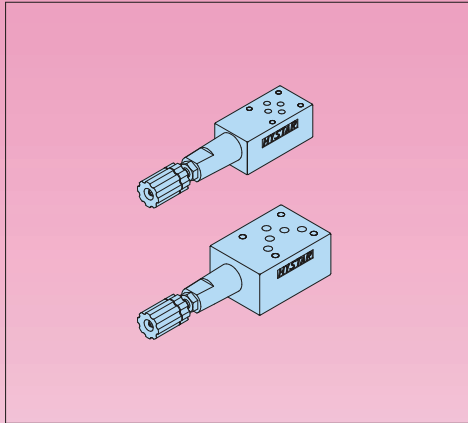


RELIEF MODULAR VALVES

Relief Valves (Modular Type)



Model & Symbol	Model & Symbol
MBP-01 (03)	MBP-04 (06)
MBA-01 (03)	MBA-04 (06)
MBB-01 (03)	MBB-04 (06)
MBW-01 (03)	

Ratings

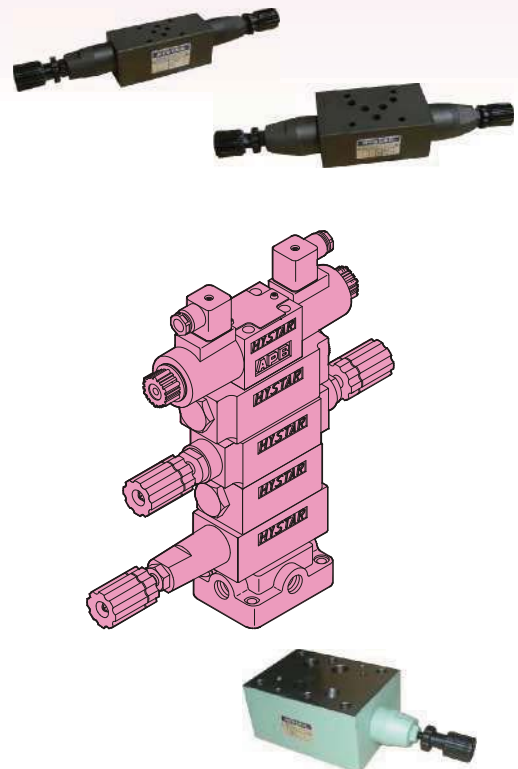
Model	Max Operating Pres bar (PSI)	Max Flow lpm (USgpm)	Valve Size	Weight kg (lb)
MB*-01-	250 (3600)	50 (13.2)	1/8"	1.1 (2.4)
MB*-03-	250 (3600)	100 (26.5)	3/8"	3.8 (8.3)
MB*-04-	250 (3600)	190 (50.2)	1/2"	7.0 (15.4)
MB*-06-	250 (3600)	300 (79.3)	3/4"	11.2 (24.6)

- This balanced piston type relief modular valve is an improved over the conventional type relief valve.
- The valve is designed to control the maximum pressure of the hydraulic circuit and also serves as a safety valve.
- It can provide normal performance in a wide range of operating pressure from 8 up to 250 bar.
- Back Pressure in tank port should be as low as possible (under 5 bar).
- In case the valves are used as safety valves, pressure setting should be higher than max. circuit pressure by 10 ~ 15 bar.
- The pressure will be increased when the pressure adjustment handle is turned clockwise, and will be reduced when the pressure adjustment handle is turned counter-clockwise.
- Be sure to re-tighten the lock nut firmly after making adjustment to the pressure.

Ordering Code

MB - **P** - **01** - **C** - **20** - **S**

Series No	Control Line	Valve Size	Pressure Adj. Range	Design No	Option Kits
Relief Modular Valves	P : P Port 	(DSG-) 01 (NFPA-D03) 	C: 8~ 140 bar 	20 DIN 912 bolts 	None: With Knob
	A : A Port 	(DSG-) 03 (NFPA-D05) 	H: 70~ 210 bar 	2090 UNC bolts (North America) 	S: Soc. Hd. Cap Screw
	B : B Port 	(DSHG-) 04 (NFPA-D07) 			
	W : A & B Port 	(DSHG-) 06 (NFPA-D08) 			



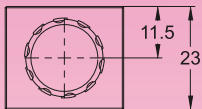
DIMENSIONS

MILLIMETERS(INCHES)

MBW-01 Relief Valves(Modular Type)

MOUNTING SURFACE:MB*-01-CETOP3
ISO 03-NFPAD03

OPTION
Design No: 30 (3090)

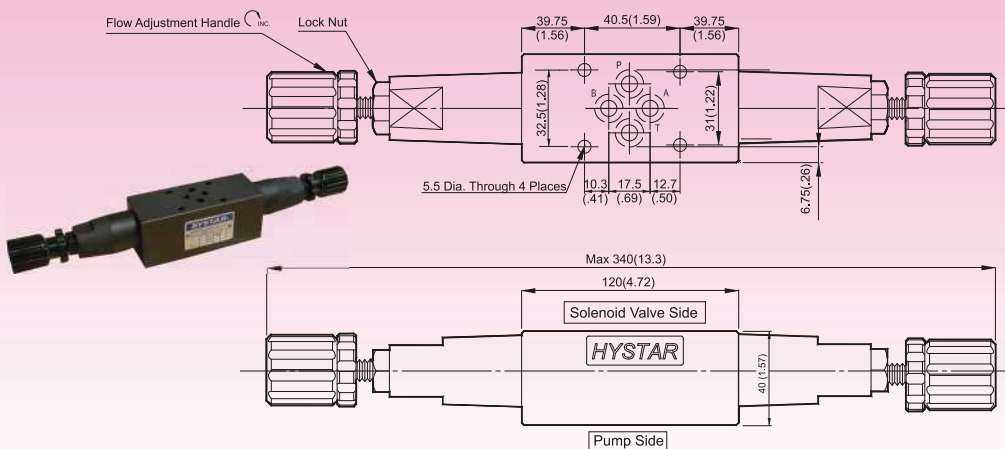


Valve Specifications & Attachment

Flow Rating	50 lpm (13.2 gpm)
Max. Pressure	250 bar (3600 psi)
Weight kg.(lbs.)	1.1 (2.4)
CODE:20	M5 X95LgX4pcs
CODE:2090	10-24UNCX4*LgX4pcs
Mounting Surface O-Ring P9 x 2 pc	



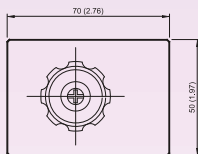
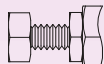
SYMBOL



MBW-03 Relief Valves(Modular Type)

MOUNTING SURFACE:MB*-03-CETOP5
ISO 05-NFPAD05

OPTION
Design No: 30 (3090)

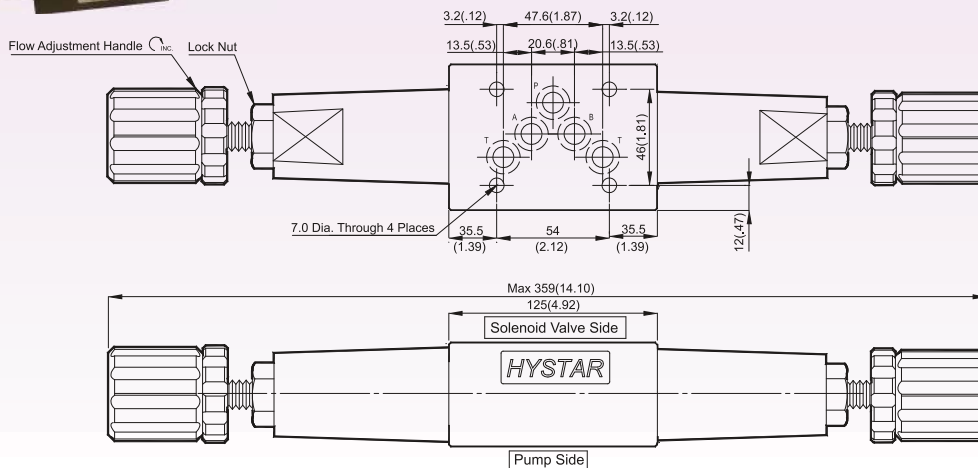


Valve Specifications & Attachment

Flow Rating	100 lpm (26.5 gpm)
Max. Pressure	250 bar (3600 psi)
Weight kg.(lbs.)	3.5 (7.7)
CODE:20	M6 X90LgX4pcs
CODE:2090	1/4-20UNCX3-1/2LgX4pcs
Mounting Surface O-Ring P12 x 5 pc	



SYMBOL

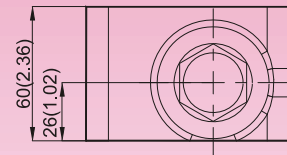
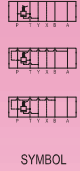
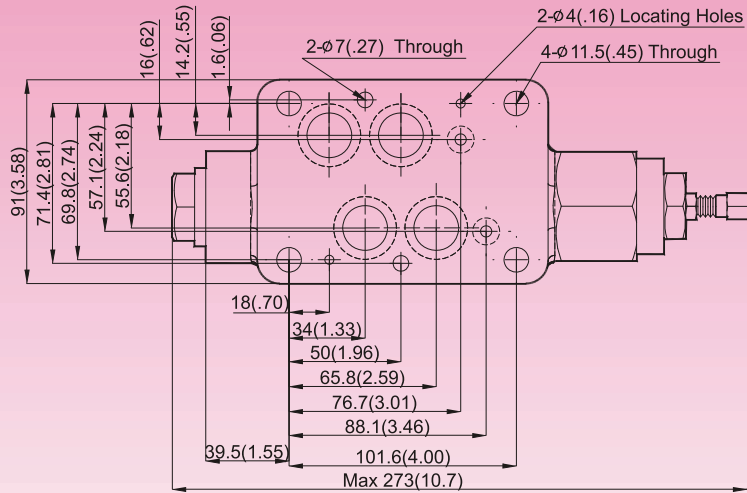


DIMENSIONS

MILLIMETERS(INCHES)

MB*-04 Relief Valves(Modular Type)

MOUNTING SURFACE:MB*-04-CETOP7
ISO 07-NFPAD07



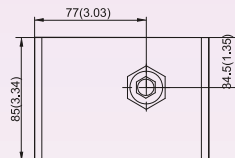
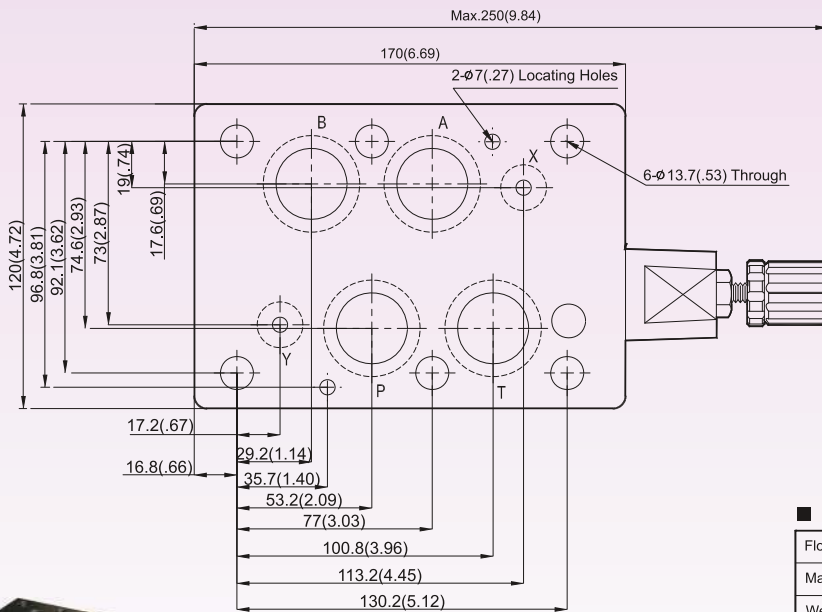
Valve Specifications & Attachment

Flow Rating	190 lpm (50.2 gpm)
Max. Pressure	250 bar (3600 psi)
Weight kg (lbs.)	7.0 (15.4)
CODE:20	M6X125LgX2pcs M10X120LgX4pcs
CODE:2090	1/4-20UNCX4-7/8"LgX2pcs 3/8-16UNCX4-5/8"Lg X4pcs
Mounting Surface O-Ring	P9 x 2 pc & P22A x 4 pcs

MBA-04
MBB-04
MBP-04

MB*-06 Relief Valves(Modular Type)

MOUNTING SURFACE:MB*-06-CETOP8
ISO 08-NFPAD08



Valve Specifications & Attachment

Flow Rating	300 lpm (79.3 gpm)
Max. Pressure	250 bar (3600 psi)
Weight kg (lbs.)	11.2 (24.6)
CODE:20	M12X140LgX6pcs
CODE:2090	1/2-13UNCX4-5/8"Lg X6pcs
Mounting Surface O-Ring	P12 x 2 pc, P28 x 4 pcs



MBA-06
MBB-06
MBP-06