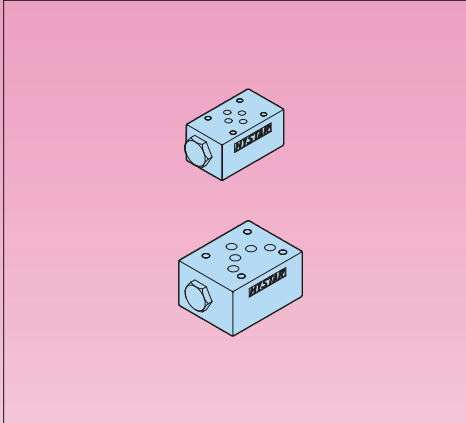


CHECK MODULAR VALVES

■ Check Valves(Modular Type)



Model & Symbol

MCP-01 (03) P T B A

Model & Symbol

MCP-04 (06) P T Y X B A

MCA-01 (03) P T B A

MCA-04 (06) P T Y X B A

MCB-01 (03) P T B A

MCB-04 (06) P T Y X B A

MCT-01 (03) P T B A

MCT-04 (06) P T Y X B A

■ Ratings

Model	Max Operating Pres bar (PSI)	Max Flow lpm (USgpm)	Valve Size	Weight kg (lb)
MC*-01-*	250 (3600)	50 (13.2)	1/8"	1.1 (2.4)
MC*-03-*	250 (3600)	100 (26.5)	3/8"	2.8 (6.1)
MC*-04-*	250 (3600)	190 (50.2)	1/2"	7.0 (15.4)
MC*-06-*	250 (3600)	300 (79.3)	3/4"	11.0 (24.2)

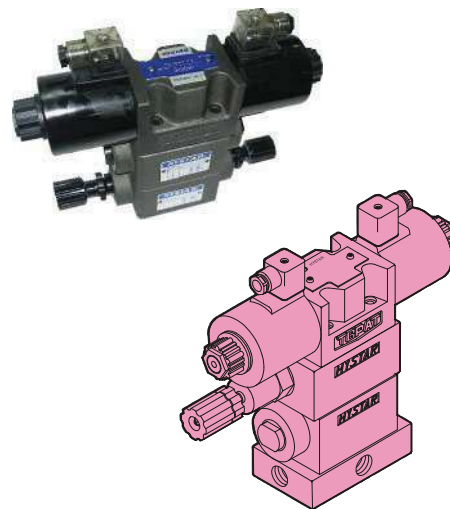
- This Valve is of the modular design improved from the check valve reverse in the P port or T port to prevent the oil from flowing in the reverse direction.
- With a valve of size 01, 03, 04, 06 the check valve is incorporated between A, B port and T port. This check modular valve of a certain type can be used for suction.



■ Ordering Code

MC - P - 03 - 2 - 20

Series No	Control Line	Valve Size	Cracking Pressure	Design No
Check Modular Valves	P : P Port 	(DSG-) 01 (NFFPA-D03) 	0: 0.35 bar 	20 DIN 912 bolts
	A : A Port 	(DSG-) 03 (NFFPA-D05) 	2: 2 bar 	2090 UNC bolts (North America)
	B : B Port 	(DSHG-) 04 (NFFPA-D07) 	4: 4 bar 	
	T : T Port 	(DSHG-) 06 (NFFPA-D08) 		





MODULAR CONTROL VALVES

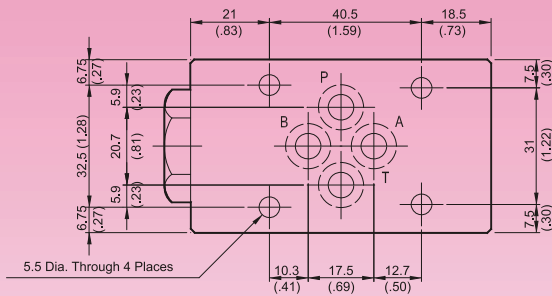
DIMENSIONS

MILLIMETERS(INCHES)

MC*-01

Check Valves(Modular Type)

MOUNTING SURFACE:MC*-01-CETOP3
ISO 03-NFPAD03

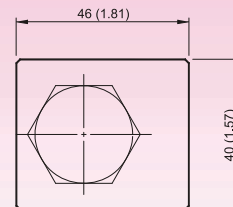
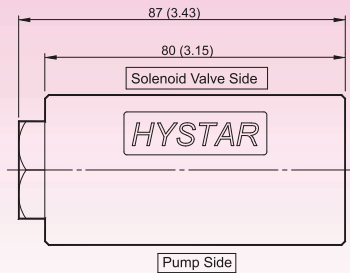


Valve Specifications & Attachment

Flow Rating	50 lpm (13.2 gpm)
Max. Pressure	250 bar (3600 psi)
Weight kg.(lbs.)	1.1 (2.4)
CODE:20	M5 X85LgX4pcs
CODE:2090	10-24UNCX3-1/4"LgX4pcs
Mounting Surface O-Ring	P9 x 4 pc



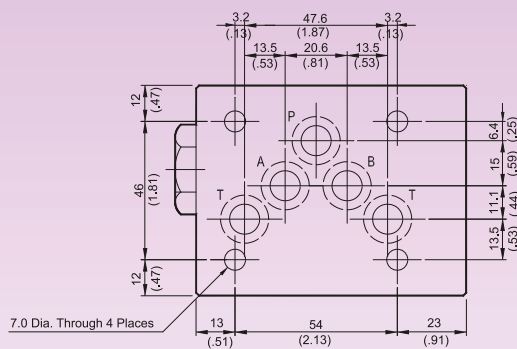
SYMBOL



MC*-03

Check Valves(Modular Type)

MOUNTING SURFACE:MC*-03-CETOP5
ISO 05-NFPAD05

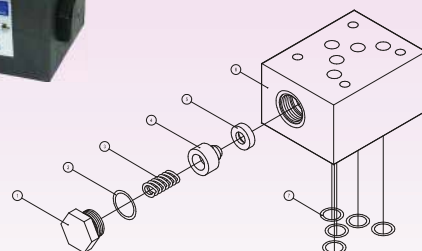
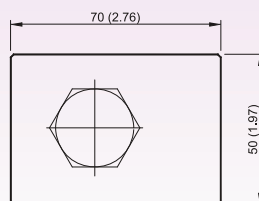
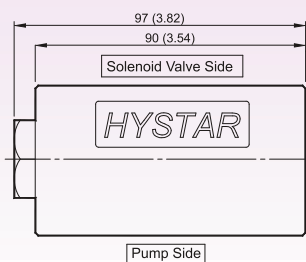


Valve Specifications & Attachment

Flow Rating	100 lpm (26.5 gpm)
Max. Pressure	250 bar (3600 psi)
Weight kg.(lbs.)	3.5 (7.7)
CODE:20	M6 X90LgX4pcs
CODE:2090	1/4-20UNCX3-1/2LgX4pcs
Mounting Surface O-Ring	P12 x 5 pc



SYMBOL



DIMENSIONS

MILLIMETERS(INCHES)

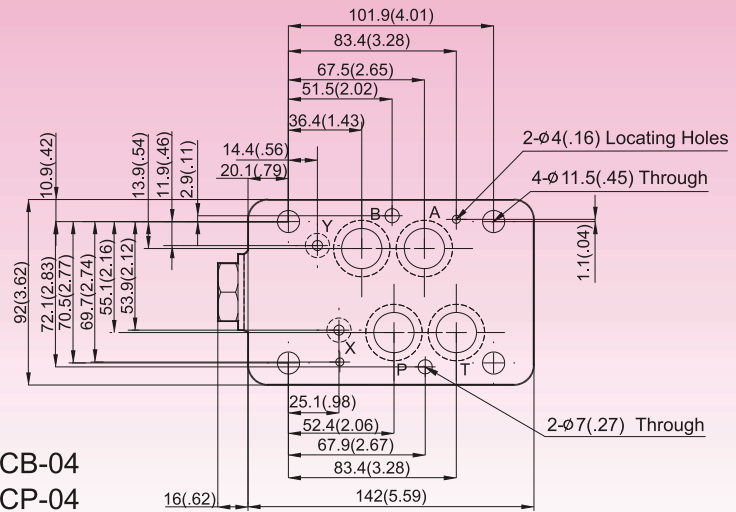
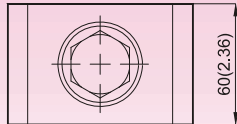
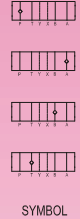
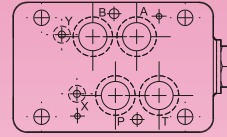
MCP-04 Check Valves(Modular Type)

MOUNTING SURFACE:MC*-04-CETOP7
ISO 07-NFPAD07

Valve Specifications & Attachment

Flow Rating	190 lpm (50.2 gpm)
Max. Pressure	250 bar (3600 psi)
Weight kg(lbs.)	7.0 (15.4)
CODE:20	M6X125LgX2pcs M10X120LgX4pcs
CODE:2090	1/4-20UNCX4-7/8"LgX2pcs 3/8-16UNCX4-5/8"Lg X4pcs
Mounting Surface	O-Ring P9 x 2 pc & P22A x 4 pcs

MCA-04
MCT-04



MCB-04
MCP-04

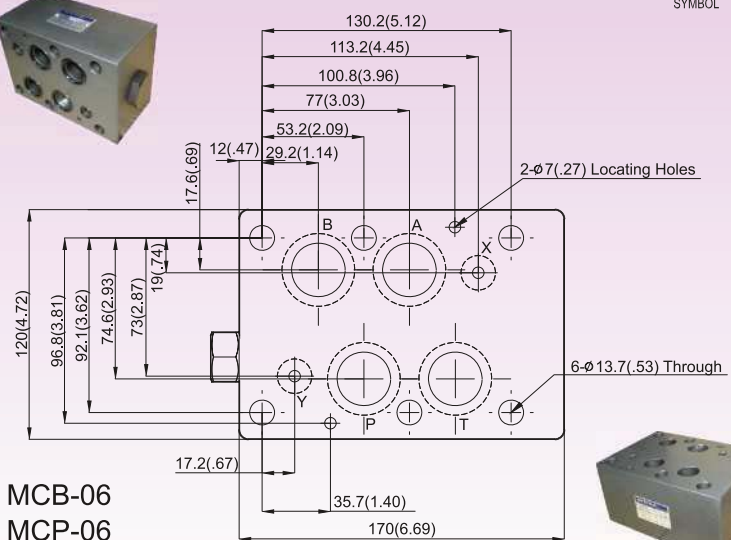
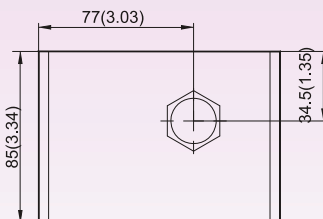
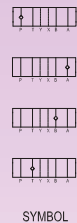
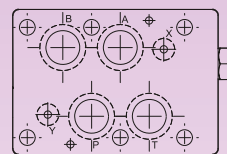
MCP-06 Check Valves(Modular Type)

MOUNTING SURFACE:MC*-06-CETOP8
ISO 08-NFPAD08

Valve Specifications & Attachment

Flow Rating	300 lpm (79.3 gpm)
Max. Pressure	250 bar (3600 psi)
Weight kg(lbs.)	11.2 (24.6)
CODE:20	M12X140LgX6pcs
CODE:2090	1/2-13UNCX4-5/8"Lg X6pcs
Mounting Surface	O-Ring P12 x 2 pc, P28 x 4 pcs

MCA-06
MCT-06



MCB-06
MCP-06

