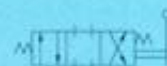










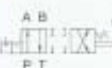






■ Ordering Code

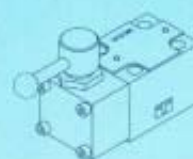
DM - **T** - **03** - **2B2** - **20**



SYMBOL

Series No	Type of Mounting	Valve Size	Pressure Range	Design No
DM: Manually Operated Directional Valves	G Subplate Mounting 	01: (1/8") ISO 4401-AB-03-4-A	2B2 	20 (G) DIN 912 bolts 
DMG: 	T Threaded Connection 	03: (3/8") ISO 4401-AC-05-4-A	2B3 	2090 (G) UNC bolts (North America) 
DMT: 		04: (1/2") ISO 4401-AD-07-4-A	2D2 	20 (T) PT Connection 
		06: (3/4") ISO 4401-AE-08-4-A	3C2 	2090 (T) NPT Connection (North America) 
		10: (1 1/4") ISO 4401-AF-10-4-A	3C60 	

DMG



DMT



MODEL	DESCRIPTION	PAGE
DMG-01	Manually Operated Directional Valves(Sub-Plate Type)	272
DMG-03	Manually Operated Directional Valves(Sub-Plate Type)	272
DMT-03	Manually Operated Directional Valves(Threaded Type)	273
DMT-04-06-10	Manually Operated Directional Valves(Threaded Type)	273

DMG-01



DMG-03



DMG-03-**-10



LIST OF SPOOL FUNCTIONS (DMG/T-01/03)

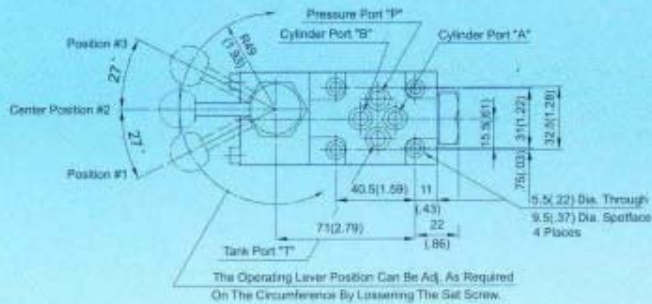
SPRING OFFSET 2 POSITION	GRAPHIC SYMBOLS (STANDARD)	SPRING CENTERED 3 POSITION	GRAPHIC SYMBOLS (STANDARD)	NO SPRING DETENTED 3 POSITION	GRAPHIC SYMBOLS (STANDARD)
2B2		3C2		3D2	
2B3		3C3		3D3	
2B8		3C4		3D4	
2B29		3C40		3D40	
		3C5		3D5	
NO SPRING DETENTED 2 POSITION	GRAPHIC SYMBOLS (STANDARD)	3C6		3D6	
		3C60		3D60	
2D2		3C7		3D7	
2D3		3C8		3D8	
2D4		3C9		3D9	
2D40		3C10		3D10	
2D5		3C11		3D11	
2D60		3C12		3D12	
2D8		3C25		3D25	
2D9		3C29		3D29	
2D10		3C48		3D48	
2D12		3C94		3D94	



DIMENSIONS

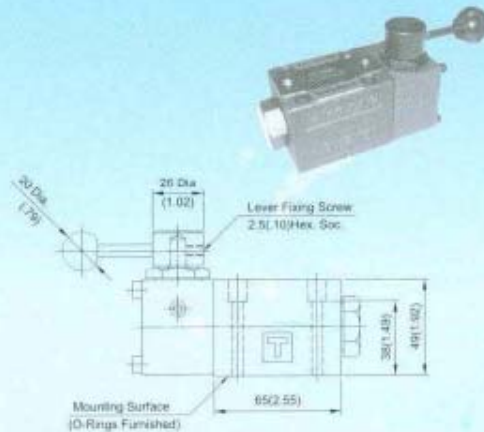
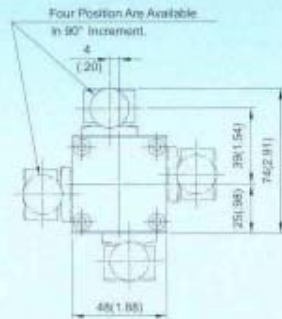
MILLIMETERS(INCHES)

DMG-01-30 Manually Operated Directional Valves(Sub-Plate Type)

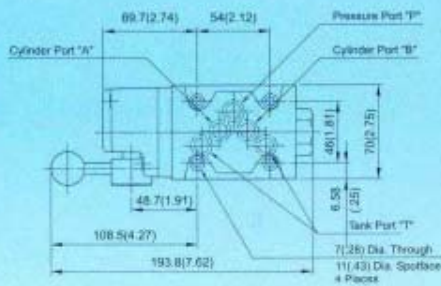


Valve Specifications & Attachment

Model	DMG-01
Flow Rating	63 lpm (16.6 gpm)
Max. Pressure	315 bar (4500 psi)
Weight kg(lbs.)	1.4 (3.1)
CODE 20	MS XAS, 4X1600
CODE 2000	10-20, 20X110, 110X110, 160X110
Surface O-Ring	P9X04pc



DMG-03-30 Manually Operated Directional Valves(Sub-Plate Type)



Valve Specifications & Attachment

Model	DMG-03
Flow Rating	120 lpm (31.7 gpm)
Max. Pressure	315 bar (4500 psi)
Weight kg(lbs.)	3.8 (8.3)
CODE 20	MS XAS, 4X1600
CODE 2000	10-20, 20X110, 110X110, 160X110
Surface O-Ring	P12X5pc

